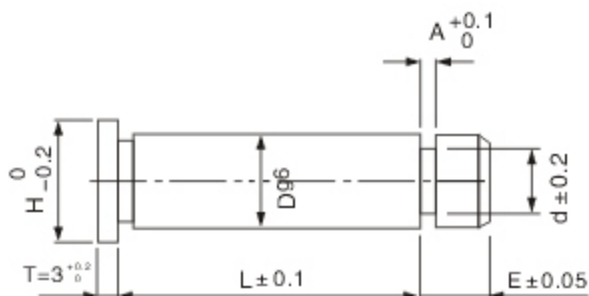
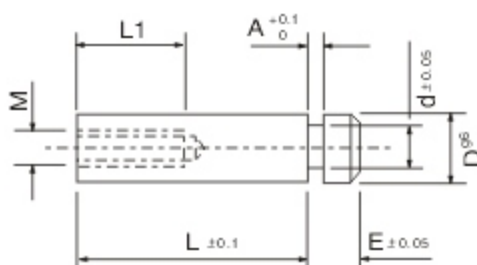




TYPE: JS52



TYPE: JS53



### Type: JS52 & JS53

Material: SK3 - 1.1545 - Carbon Tool Steel

Hardness: HRC 58~60 Through Hardening

Type No.	D <sub>g6</sub>	d	E	H	A	L										
						22	25	28	30	33	36	40	50	60		
JS52	4	-0.004	2.0	5	6	0.5~0.8	●	●	●	●	●	●	●	●	●	●
	6	-0.012	3.6		8	1.0~1.6	●	●	●	●	●	●	●	●	●	●
	8	-0.005	5.0	7	10	1.0~2.0	●	●	●	●	●	●	●	●	●	●
					10	-0.014	6.0	13	1.6~2.5	●	●	●	●	●	●	●
	13	-0.006	7.0		16	2.5~3.6	●	●	●	●	●	●	●	●	●	
	16	-0.017	8.0		19	2.5~4.0	●	●	●	●	●	●	●	●	●	
	20	-0.007	10.0		12	23	3.6~5.0	●	●	●	●	●	●	●	●	●
	-0.020															

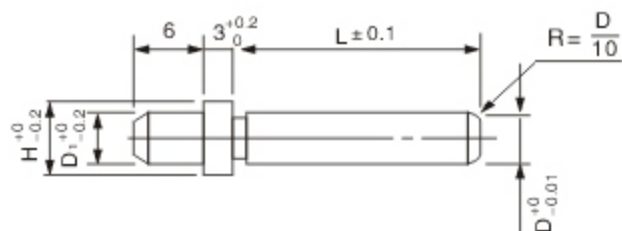
Type No.	D <sub>g6</sub>	d	D1	T	M	H	L1	L2	A	L							
										22	25	28	30	36	40	50	60
JS53	6	-0.004	3.6	8	3	M3X0.5	5.5	15	9	0.5~3.0	●	●	●	●	●	●	●
	8	-0.005	5.0	10	3	M4X0.7	7.0	15	9	1.0~3.0	●	●	●	●	●	●	●
	10	-0.005	6.0	13	8	M4X0.7	7.0	21	11	1.0~3.0	●	●	●	●	●	●	●
	13	-0.006	7.0	16	9	M5X0.8	8.5	21	11	1.6~3.6	●	●	●	●	●	●	●

Order Example:  -  -  -   
 -  -  -

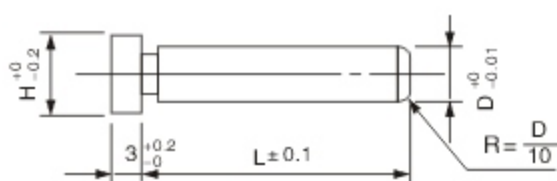
■ Customize are also available



TYPE: JS54



TYPE: JS55



### Type: JS54 & JS55

Material: SK3 - 1.1545 - Carbon Tool Steel

Hardness: HRC58~60 Through Hardening

※ Only JS54 has section "D1"

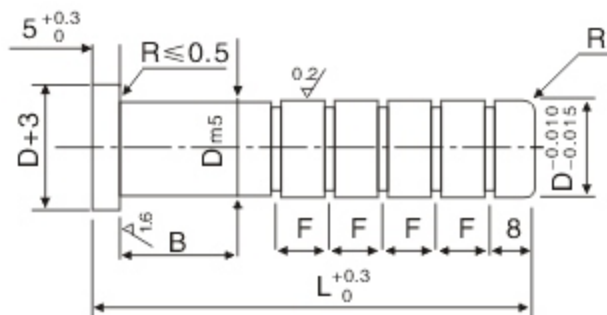
D	H	D1	L							
			15	20	25	30	35	40	45	50
3	5	3	●	●	●	●	●	●	●	●
4	6	4	●	●	●	●	●	●	●	●
5	7	4	●	●	●	●	●	●	●	●
6	8	5	●	●	●	●	●	●	●	●
8	10	7	●	●	●	●	●	●	●	●
10	12	9	●	●	●	●	●	●	●	●

Order Example:  -  -   
 -  -

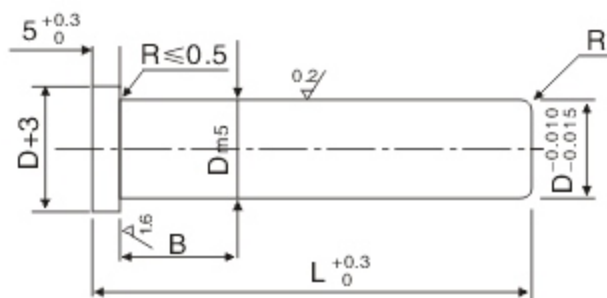
■ Customize are also available



TYPE: JS56



TYPE: JS57



### Type: JS56 & JS57

Material: SUJ2 - 1.3505 - High Carbon Chrome Bearing Steel  
 Hardness: HRC58+4 Through High Frequency Quenching

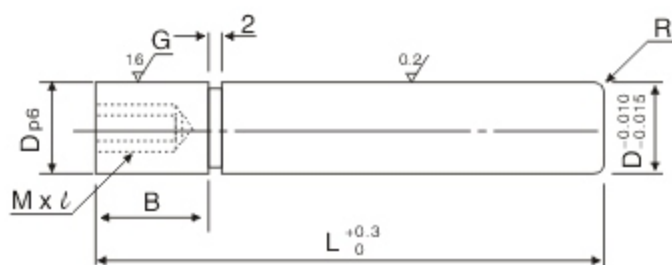
D	L (10mm increments)	Groove / Unit							Dm5	R	B
		40~	50~	70~	80~	90~	160~	180~			
8	40~120	2	3	4	5	6			+0.012 +0.006	1.0	10
10	40~150	2	3	4	5	6		10			13
13	40~180	2	3	4	5	6	7	8	+0.015 +0.007	1.5	16
16	50~200	2	3	4	5	6	7	8			16
20	60~200	2	3	4	5	6	7	8	+0.017 +0.008	2.0	25
25	70~200	2	3	4	5	6	7	8			25

Order Example:  -  -   
 -  -

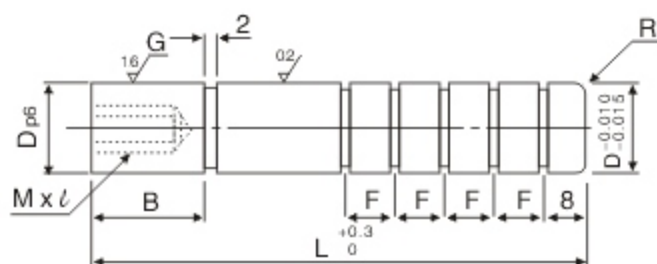
■ Customize are also available



TYPE: JS58



TYPE: JS59



### Type: JS58 & JS59

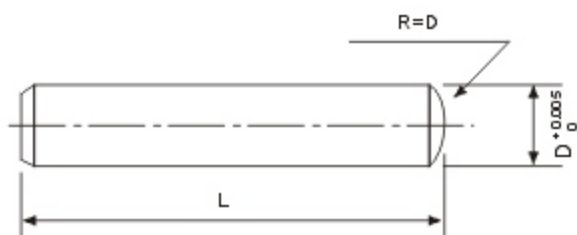
Material: SUJ2 - 1.3505 - High Carbon Chrome Bearing Steel

Hardness: HRC58+4 Through High Frequency Quenching

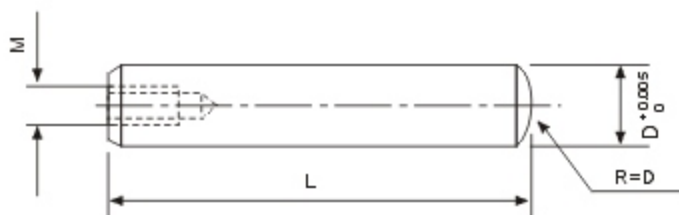
D	L (10mm increments)	Groove / Unit								Dp6	M x l Pitch	R	B
		40~	50~	70~	80~	90~	160~	180~					
8	40~120	2	3	4	5	6			8	+0.024 +0.015	M5x12 P0.8	1.0	10
10	40~150	2	3	4	5	6			10				13
13	40~180	2	3	4	5	6	7	8	13	+0.029 +0.018	M6x15 P1.0	1.5	16
16	50~200	2	3	4	5	6	7	8	16				20
20	60~200	2	3	4	5	6	7	8	20	+0.035 +0.022	M8x20 P1.25	2.0	25
25	70~200	2	3	4	5	6	7	8	25				28

Order Example:  -  -   
 -  -

■ Customize are also available



TYPE: JS60



TYPE: JS61

### Type: JS60 & JS61

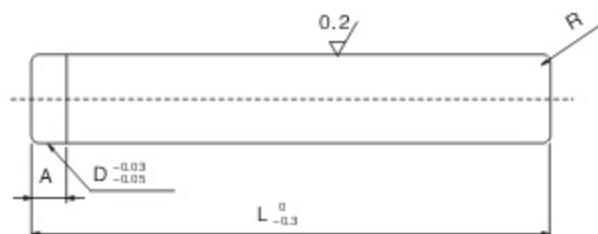
Material: S45C - 1.1191 - Carbon Steel for Machinery Structures

Hardness: HRC53~58 Through Hardening

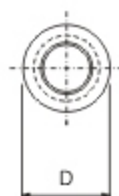
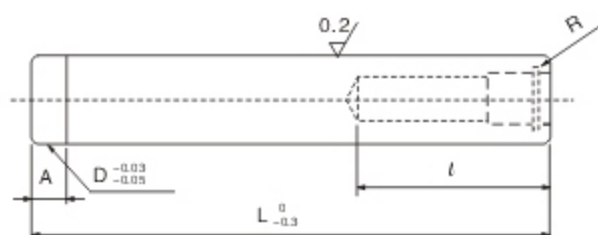
D	L															
	15	20	25	30	35	40	45	50	55	60	65	70	75	80	90	100
3	●	●	●	●	●	●	●	●	●	●	●	●	●	●	●	●
4	●	●	●	●	●	●	●	●	●	●	●	●	●	●	●	●
5	●	●	●	●	●	●	●	●	●	●	●	●	●	●	●	●
6	●	●	●	●	●	●	●	●	●	●	●	●	●	●	●	●
8	●	●	●	●	●	●	●	●	●	●	●	●	●	●	●	●
10	●	●	●	●	●	●	●	●	●	●	●	●	●	●	●	●
12	●	●	●	●	●	●	●	●	●	●	●	●	●	●	●	●
14				●	●	●	●	●	●	●	●	●	●	●	●	●
16				●	●	●	●	●	●	●	●	●	●	●	●	●

Order Example:  -  -   
 -  -

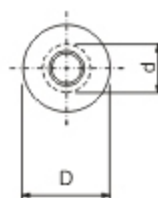
■ Customize are also available



TYPE: JS62  
(Regular)



TYPE: JS63  
(For Adjustable Stopper)



TYPE: JS64  
(For Fixed Stopper)

### Type: JS62 ~ JS64

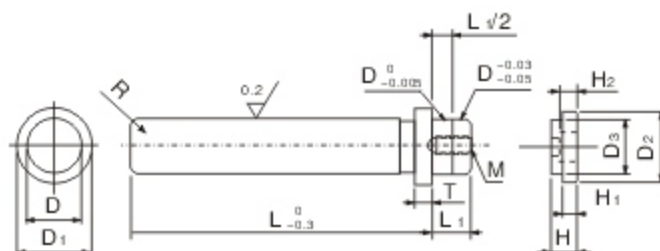
Material: SUJ2 - 1.3505 - High Carbon Chrome Bearing Steel

Hardness: HRC58+4 T through High Frequency Quenching

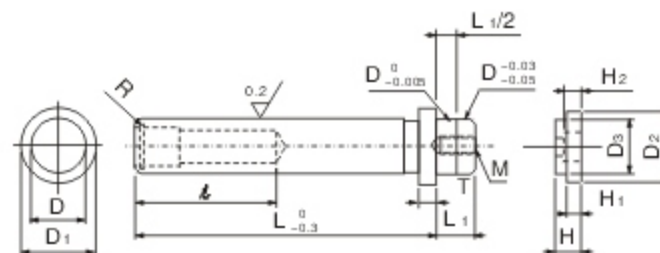
D		A	R	l	d	L (10mm increments)
20	+0.020 +0.015	4	2.0	38	14	100~300
22			3.0	42		120~300
25	+0.025 +0.020	5	3.5	50		120~350
28			4.0	50	140~400	
32	+0.030 +0.025	6	4.0	60	20	160~400
38			5.0	60		180~450
45	+0.035 +0.030	7	5.0	70	180~450	
50			5.0	70	200~450	
60				70		200~500

Order Example:  -  -   
 -  -

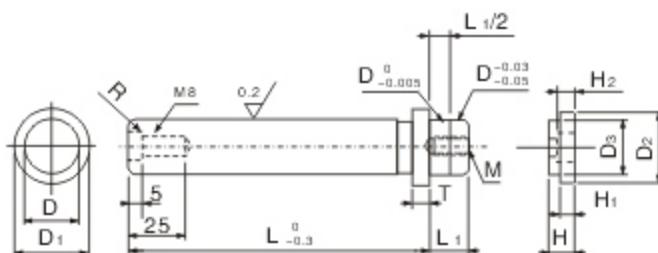
■ Customize are also available



TYPE: JS65  
(Regular)



TYPE: JS66  
(For Adjustable Stopper)



TYPE: JS67  
(For Fixed Stopper)

### Type: JS65 ~ JS67

Material: SUJ2 - 1.3505 - High Carbon Chrome Bearing Steel  
Hardness: HRC58+4 Through High Frequency Quenching

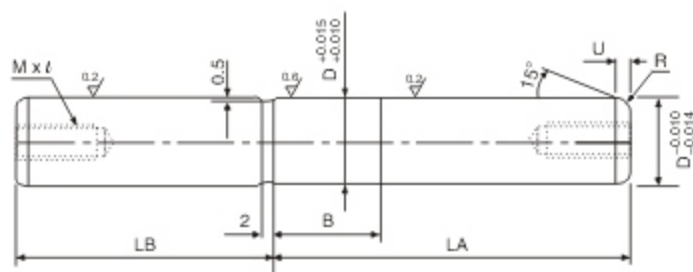
D	$\epsilon$	D1	R	T	L1	D2	D3	H	H1	H2	d	M	L (10mm increments)
20	+0.020	38	29	2.0	5	15	28	19.5	14	7	8	M8x20	80~250
22	+0.015	42	31	3.0	8	16	30	21.5					80~250
25		50	36		18	35	24.5	80~300					
28	+0.025	50	39	3.5	10	20	36	27.5	16	8	10	M10x25	100~300
32	+0.020	60	44		23	40	31.5	120~300					
38	+0.030	60	53	4.0	12	27	49	37.5	18	10	12	M12x30	140~400
45	+0.025	70	59		32	55	44.5	140~400					
50	+0.035	70	69	5.0	15	35	62	49.5	20	12	14	M14x35	160~400
60	+0.030	70	79		42	72	59.5	160~400					

Order Example:  -  -   
 -  -

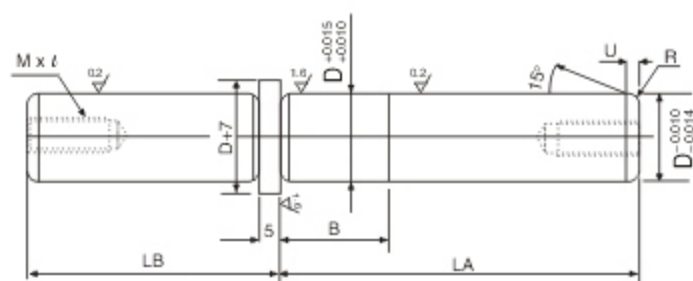
■ Customize are also available



TYPE: JS68



TYPE: JS69



### Type: JS68 & JS69

Material: SUJ2 - 1.3505 - High Carbon Chrome Bearing Steel  
 Hardness: HRC 58+4 Through High Frequency Quenching

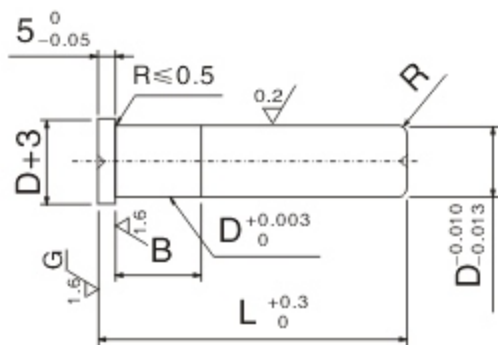
D	LA	LB (10mm increments)	B (10mm increments)	U	R	M x l		
13	60	30~50	10~30	2	1.5	M5 x 22		
	70	30~60						
	80	40~60						
16	70	30~60		3	2	M6 x 25		
	80	30~70						
	90	40~80						
20	80	40~70				4	3	M8 x 25
	90	40~70						
	100	50~80						
25	90	50~70		110	60~90			
	100	50~80						
	110	60~90						

Order Example:  -  -  -  -   
 -  -  -  -

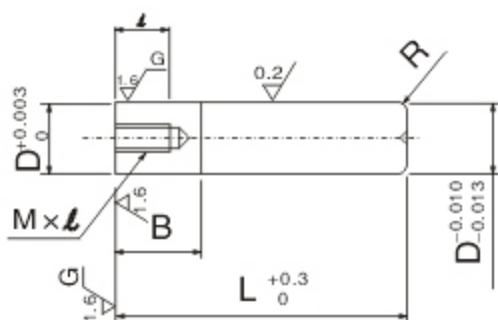
■ Customize are also available



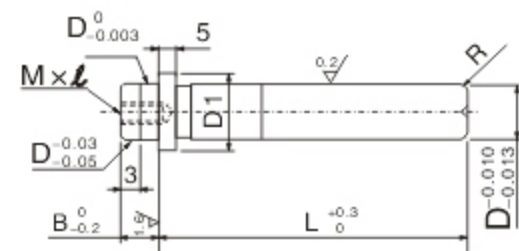
TYPE: JS70



TYPE: JS71



TYPE: JS72



### Type: JS70 ~ JS72

Material: SUJ2 - 1.3505 - High Carbon Chrome Bearing Steel

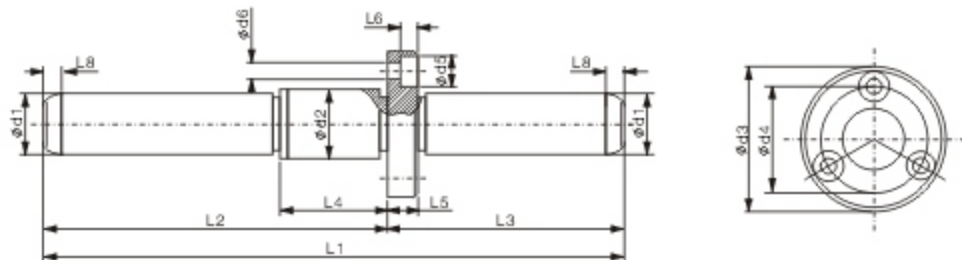
Hardness: HRC58+4 Through High Frequency Quenching

Type No.	D	L (10mm increments)	M x l Pitch	R	B
JS70 JS71	10	40~100	M5 x12 P0.8	1.0	13
	13	50~120	M6 x15 P1.0	1.5	16
	16	50~140		1.5	20
	20	70~140	M8 x20 P1.25	2.0	25

Type No.	D	L (10mm increments)	M x l Pitch	D1	R	B
JS72	10	40~60	M5 x12 P0.8	16	1.0	8
	13	40~70	M6 x15 P1.0	20	1.5	10
	16	40~100		23		
	20	40~100	M8 x20 P1.25	27	2.0	13

Order Example:  -  -   
 -  -

■ Customize are also available



### Type: JS73

Material: SUJ2 - 1.3505 - High Carbon Chrome Bearing Steel

Hardness: HRC58+4 Through High Frequency Quenching

d1	d2	d3	d4	d5	d6	L1	L2	L3	L4	L5	L6	L8
12 <sup>0</sup> <sub>-0.003</sub>	15±0.0025	28	20	6	3.4	90	50	40	12	6	3.4	3
						120	60	60				3
16 <sup>0</sup> <sub>-0.003</sub>	18±0.0025	38	28	8	4.5	132	70	62	16	8	4.6	5
						152	90	62				5
						180	90	90				5
19 <sup>0</sup> <sub>-0.004</sub>	22±0.003	42	32	8	4.5	160	90	70	20	8	4.6	5
						180	110	70				5
25 <sup>0</sup> <sub>-0.004</sub>	26±0.003	53	40	11	6.6	170	85	85	25	12	6.8	5
		48	38	8	4.5	200	100	100				22
		53	40	11	6.6	212	140	72	25	12	6.8	5
						254	140	114				5
32 <sup>0</sup> <sub>-0.004</sub>	32.5±0.0035	60	46	11	6.6	175	90	85	27	12	6.8	5
						192	120	72				5
						212	120	92				5
						252	140	112				5
40 <sup>0</sup> <sub>-0.004</sub>	42±0.0035	70	56	11	6.6	220	120	100	27	12	6.8	5
						240	130	110				5
						260	140	120				5

Order Example:  -  -   
 -  -

■ Customize are also available