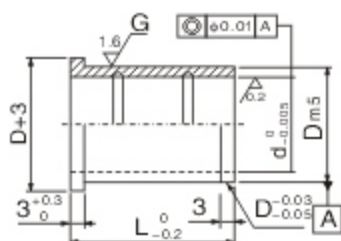
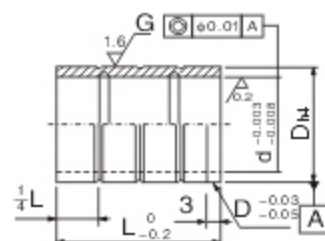




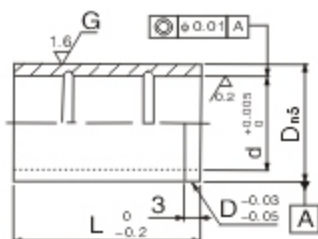
TYPE: JS37



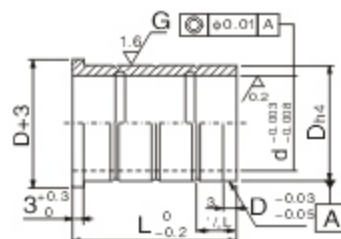
TYPE: JS38



TYPE: JS39



TYPE: JS40



Type: JS37 ~ JS40

Material: SUJ2 - 1.3505 - High Carbon Chrome Bearing Steel

Hardness: HRC58+4 Through High Frequency Quenching

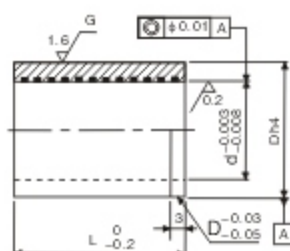
d	L								D
	10	13	16	20	22	25	30	35	
8	●	●	●	●					12
10	●	●	●	●	●	●			14
13		●	●	●	●	●	●	●	18
16		●	●	●	●	●	●	●	22
20			●	●	●	●	●	●	25
25				●	●	●	●	●	32

Order Example: - -
 - -

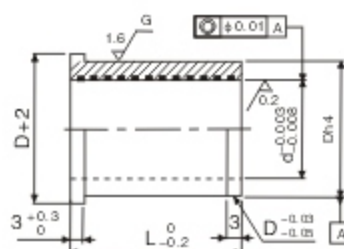
■ Customize are also available



TYPE: JS41



TYPE: JS42



Type: JS41 & JS42

Material: SUJ2 - 1.3505 - High Carbon Chrome Bearing Steel
MoS₂ (Groove)

Hardness: HRC58+4 Through High Frequency Quenching

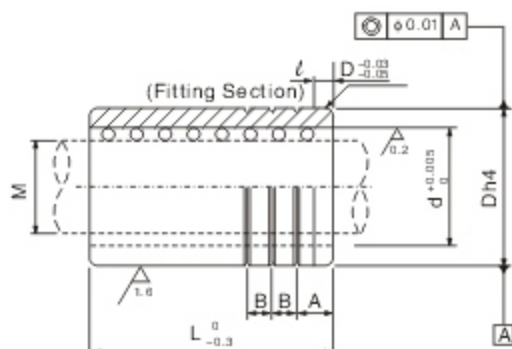
d	L								Dh4	
	10	13	16	20	22	25	30	35		
8	●	●	●	●					13	0 -0.005
10	●	●	●	●	●	●			16	
13		●	●	●	●	●	●		20	
16		●	●	●	●	●	●	●	24	0 -0.006
20			●	●	●	●	●	●	28	
25					●	●	●	●	34	0 -0.007

Order Example: - -
 - -

■ Customize are also available

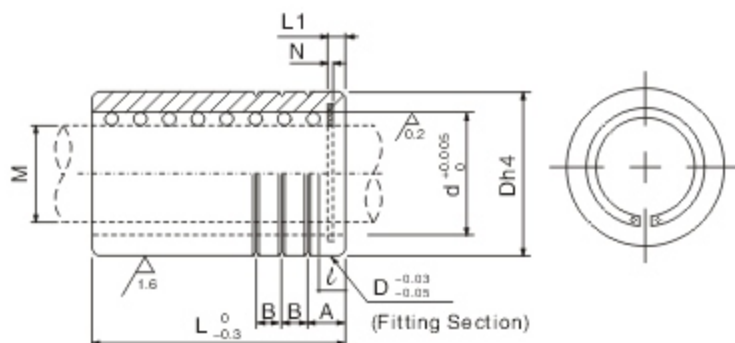


TYPE: JS43



TYPE: JS44

(Include Clipper)



Type: JS43 & JS44

Material: SUJ2 - 1.3505 - High Carbon Chrome Bearing Steel

Hardness: HRC58+4 Through High Frequency Quenching

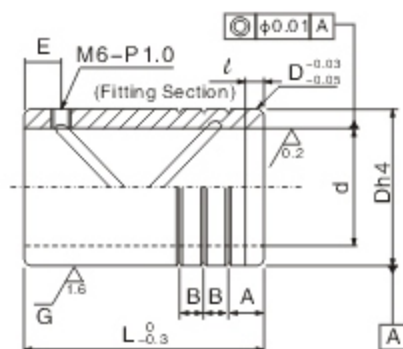
M	d	Dh4		ℓ	A	B	L1	N	L					
									50	60	80	100	120	
20	+0.020 +0.015	26	37	-0 -0.007	4	10	6	4.0	1.35	●				
22		28	40							●	●			
25		31	45							●	●			
28	+0.025 +0.020	36	50	-0 -0.008	5	12	7	4.5	1.65		●	●		
32		40	55									●	●	
38	+0.030 +0.025	48	64	-0 -0.008	6	15	10	5.0	1.9			●	●	
45		55	74										●	●
50	+0.035 +0.030	60	83	-0 -0.010	6	15	10	5.0	2.2				●	●
60		70	95											●
								6.0	2.5				●	●

Order Example: - -
 - -

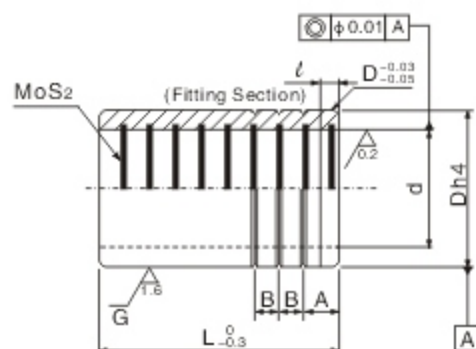
■ Customize are also available



TYPE: JS45



TYPE: JS46



Type: JS45 & JS46

※ Only JS45 has section "E"

※ Only JS46 has MoS₂

Material: SUJ2 - 1.3505 - High Carbon Chrome Bearing Steel + MoS₂

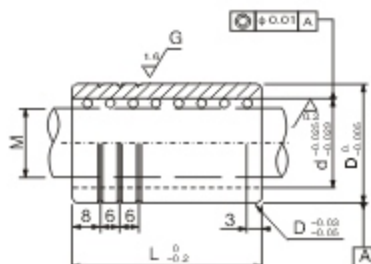
Hardness: HRC58+4 Through High Frequency Quenching

d	Dh4	t	A	B	E	L							
						50	60	80	100	120			
20	+0.027 +0.022	31	-0 -0.007	4	10	6	10	●					
22		34						●	●				
25		37						●	●				
28		42						●	●				
32	+0.032 +0.027	46	5	12	7	L80 ≥ E10 L100 ≥ E15			●	●			
38	+0.037 +0.032	54	6	15	10		15			●	●		
45	+0.040 +0.035	62				-0 -0.008						●	●
50	+0.045	70										●	●
60	+0.040	80				-0 -0.010						●	●

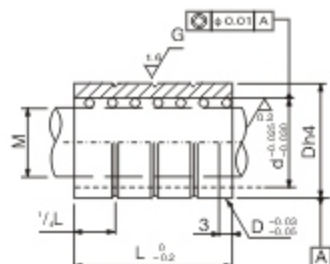
Order Example: - -
 - -

■ Customize are also available

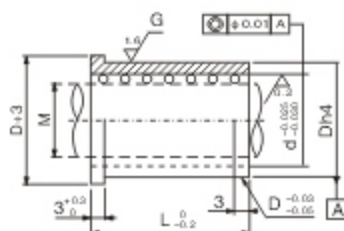
TYPE: JS47



TYPE: JS48



TYPE: JS49



Type: JS47 ~ JS49

Material: SUJ2 - 1.3505 - High Carbon Chrome Bearing Steel

Hardness: HRC58+4 Through High Frequency Quenching

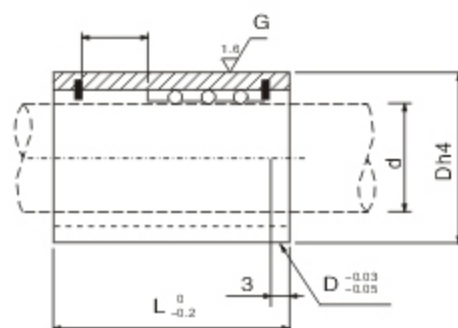
Type No.	M	L								d	Dh4	
		20	25	30	35	40	45	50	60			
JS47	13			●	●					17	24	0 -0.005
	16				●	●				20	28	
	20					●	●	●		26	34	
	25						●	●	●	31	40	
JS48 JS49	10	●	●	●						14	18	0 -0.005
	13	●	●	●						17	22	0 -0.006
	16		●	●	●					20	26	
	20		●	●	●	●				26	31	
	25				●	●				31	37	0 -0.007

Order Example: - -
 - -

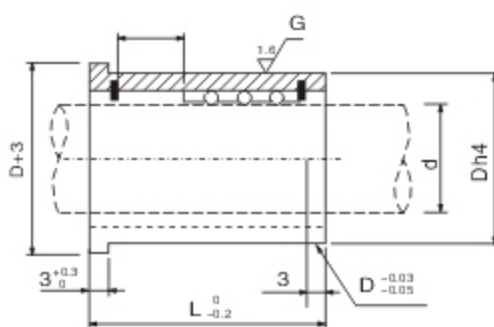
■ Customize are also available



TYPE: JS50



TYPE: JS51



Type: JS50 & JS51

Material: SUJ2 - 1.3505 - High Carbon Chrome Bearing Steel

Hardness: HRC58+4 Through High Frequency Quenching

d	L					Dh4		Sx2 (Maximum Stroke)
	20	25	30	35	40			
8	●					16	0 -0.005	10
10		●				20	0 -0.006	
13		●				25		
16			●			28	0 -0.007	15
20			●			32		
25					●	38		

Order Example: - -
 - -

■ Customize are also available