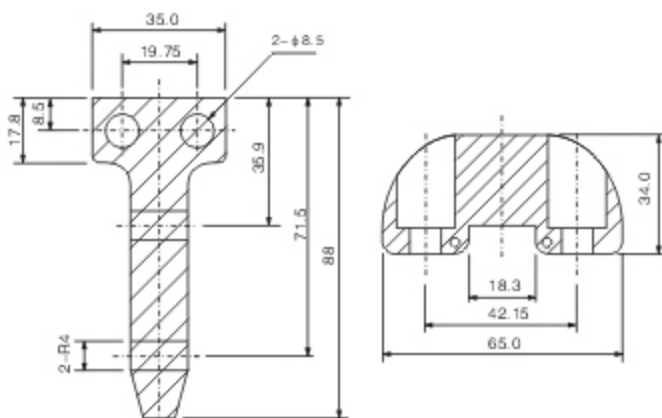
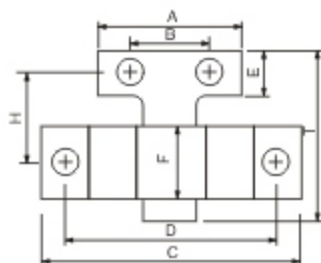




(JC46-Moon Type)



(JC47-Short Type)



Type: JC46 & JC47

Material: JC 46-SUS404-Stainless Steel

JC 47-SCM21-Chrome Molybdenum Steel

Hardness: JC 46-HRC50+/-2

JC 47-HRC55+/-5

Characteristic:

1. Based on its simple and easy design, the slide lock makes molds open and close completely, and it also makes installation and interchanging seem effortless.
2. Excellent for 3 plate mold and for its precision injection (for example: needle -point injection). It will cut off the excessive materials and leave the mold at the time of finishing.
3. 4 Different styles to choose from:
 - JC47-2: Good for molds less than 5 oz
 - JC47-3: Good for medium size molds
 - JC47-4: Good for large size molds
4. It is well-known for its exceptional quality and was made by imported springs, heat-treated and grinded alloy steels.

Type No.	A	B	C	D	E	F	H	T	Thread⊕	Pulling res. kg
JC47-2S	40	26	72	60	20	20	23	49	M8	250
JC47-2L	36	22					66	96		
JC47-3S	50	30	113	90	22	30	38	73	M10	300
JC47-3L							79	118		
JC47-4S	50	30	113	90	22	30	98	73	M12	400
JC47-4L					25		103	135		

※PLEASE SPECIFY THE TYPE NO. DUE TO THE DIFFERENT MATERIAL.

Order Example:

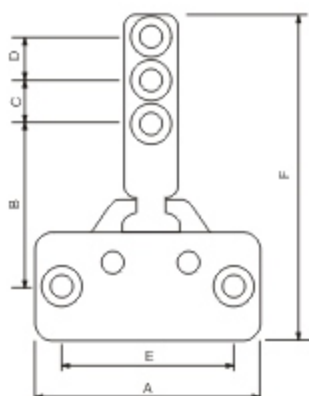
■ Customize are also available



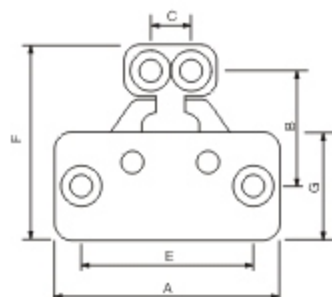
D-TYPE

Type: JC48

Material: SK2, Tool Steel
Hardness: HRC58+/-2



JC48-1



JC48-2

Type No.	A	B	C	D	E	F	G	Pull res.	Thread
JC48-1	78	58	15	15	60	116	38	500KG	5/16"
JC48-2	78	40	15	-	60	68	38	500KG	5/16"

Order Example:

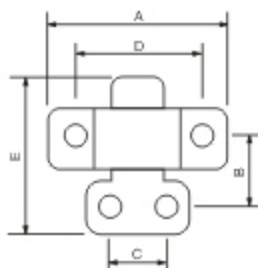
■ Customize are also available



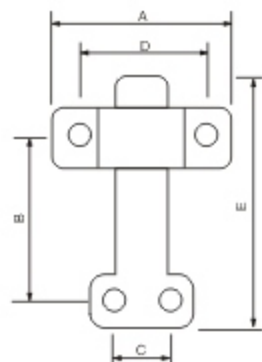
R-TYPE

Type: JC49

Material: SK2, Tool Steel
Hardness: HRC58+/-2



JC49-1

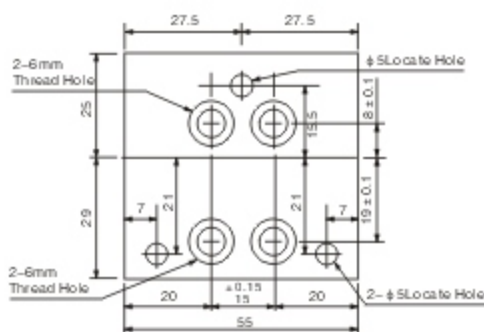


JC49-2

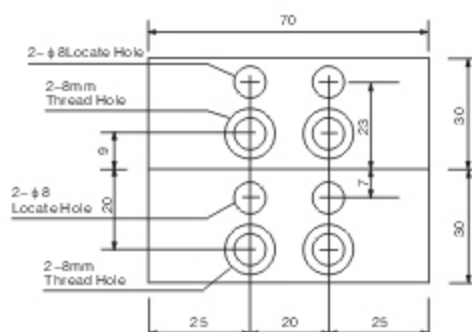
Type No.	A	B	C	D	E	Pull res.	Thread
JC49-1	62	28	20	45	54	400KG	5/16"
JC49-2	62	62	20	45	88	400KG	5/16"

Order Example:

■ Customize are also available



(STANDARD FOR 100kg,200kg,300kg)



(STANDARD FOR 600kg)

Type: JC50

Material: SCM21, Chrome Molybdenum Steel

Hardness: HRC55+/-5

Characteristic:

1. Excellent for 3 plate mold and for its precision injection (for example: needle-point injection). It will cut off the excessive materials and leave the mold at the time of finishing (especially good for double-color injection)
2. Slide lock was made by precision casting methods. Hanger was made by the both sides that make the lock slide can endure over 100,000 times of usage.
3. When assemble the slide lock, line up both sides evenly, then using 5mm reamer to ream.

4. 2 different sizes with 4 different mold clamping force:

JC50-100 with mold clamping force up to 100kg

JC50-200 with mold clamping force up to 200kg

JC50-300 with mold clamping force up to 300kg

JC50-600 with mold clamping force up to 600kg

Can be used for more than 2 sets of Slide Locks when install into larger molding machines.

Type No.	Kg
JC50	100
	200
	300
	600

Order Example: -

-

■ Customize are also available