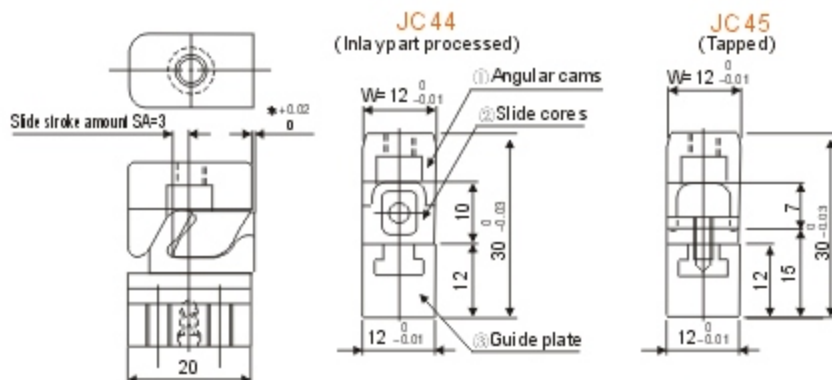


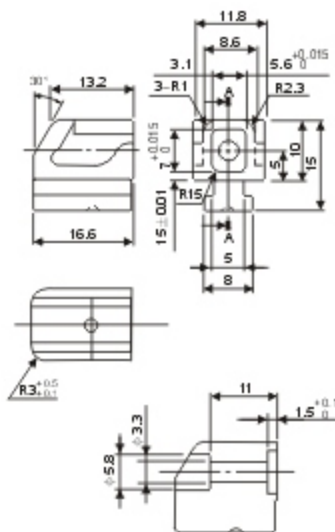
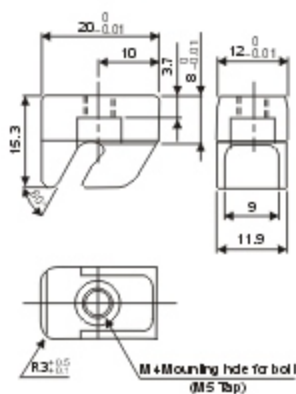
Mini Slide Core Unit -Slim Type -



± 0.02 is the precision of units. Note that the precision will change according to assembling.

(Inlay part processed)

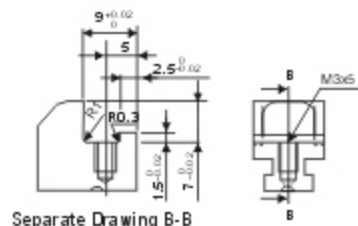
① Angular cams



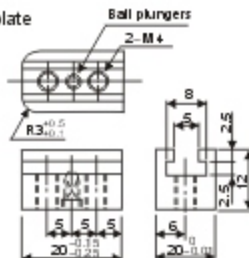
Separate Drawing A-A

(Tapped)

② Slide cores



③ Guide plate



Type: JC44 & JC45

Material: SKD11 Tool Steel

Type	SA	W
JC44(Inlay)	3	12
JC45(Tapped)	3	12

Characteristics

- Space saving
 - Saves installation space by 50% due to the structure change of sliding solution.
- With slide core lock function
 - Stably activates the slide core thanks to the ball plunger.
- Installation method can be selected between the two installation methods for core section.
- Total cost reduction
 - The angular cam, slide core and guide plate come in a set, which does not require oblique hole boring, resulting in process cost savings. (Please procure the core part via in-house production.)
 - Simple structure and low-cost.
 - Eliminates the complex calculation such as the slide stroke, etc.

Notes

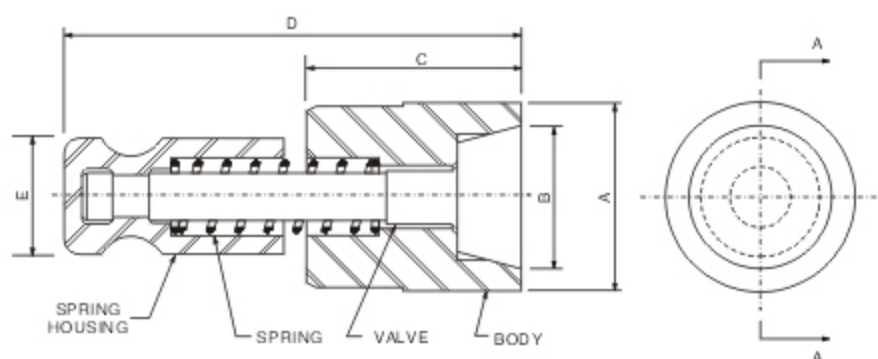
- This product is developed for injection molding die. Do not use for other purposes.
- Be sure to apply grease to the sliding surface to prevent it from burning.

Accessory Parts

No.	Description	Material	Hardness	Treatment	QTY
1	Angular Cams	S45C	40±2HRC	Nitrided	3
2	Slide Cores	SKD11	58-60HRC	-	1
3	Guide rails	S45C	40±2HRC	Nitrided	1

Order Example: - -
 - -

■ Customize are also available



Type: JC51

Material: Stainless Steel

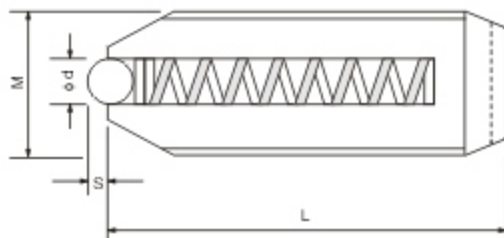
Hardness: HRC55+/-2

A	B	C	D	E
8	6.6	11	24	6
12	9.7	18	34	8
18	14.8	22	45.5	12

Order Example: Type - A

JC51 - 8

■ Customize are also available



Type: JC57 & JC58

Material: SCM21 Chrome Molybdenum steel (Structure)

SUJ2 High Carbon Chrome Bearing Steel (Ball)

Hardness: HRC55+/-5

(METRIC STANDARD)

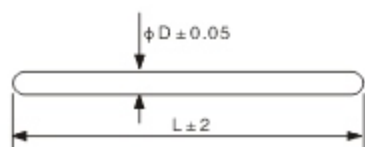
Type No.	M × Pitch	φ d	S	L	Load Capacity	
					min	max
JC57-4	4 × 0.7	2.5	1.0	9	0.3	1.0
JC57-5	5 × 0.8	3.0	1.0	12	0.5	1.5
JC57-6	6 × 1.0	3.5	1.2	14	0.7	2.0
JC57-8	8 × 1.25	5.0	1.8	16	0.9	2.5
JC57-10	10 × 1.5	6.0	2	19	1.0	3.0
JC57-12	12 × 1.75	8.0	3	22	1.6	5.0
JC57-16	16 × 2.0	10.0	4	25	2.5	8.0

(INCH STANDARD)

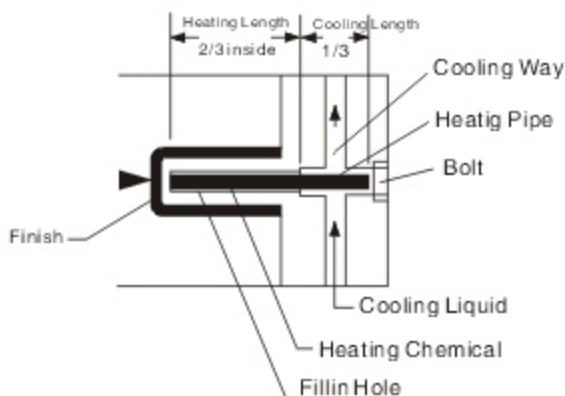
Type No.	SCREW (inch)	φ d	S	L	Load Capacity	
					min	max
JC58-2 1/2	5/16	5	2	17	1.3	2.6
JC58-3	3/8	6	2	17	1.0	3.0
JC58-4	1/2	8	3	17	1.6	5.0

Order Example:

■ Customize are also available



Standard Filling Area



Type: JC60

Material: Brass + Cooling Liquid

Advantages:

- 1.Can save at least 30% of molding cycle.(super absorbency and cool down time)
- 2.Less cull in molding products.(can prevent the final products from shrinkage and deformation.)
- 3.Produce highly accurate final molding products(preventing water from boiling)
- 4.Outstanding surface on the final products.(avoid any water waste)
- 5.Can prevent color from inconsistency.(endure long-hour operating time)
- 6.Help maintaining molds and reducing labor cost.
- 7.Simplely add heatsink to improve molds function.

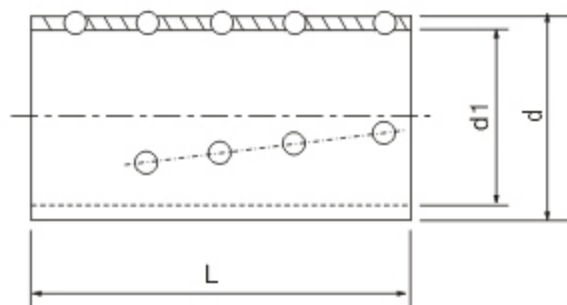
Installation:

- 1.When installing into molds, please make sure the space is at least 0.1mm to 0.2mm wider than heatsink.
- 2.After installing, please use fitters to fill the gap.
- 3.Leave at least twice of the hole space for water cooling path.
- 4.For safety, please insert at least 1/3 of heatsink into molds.

D	L
3	40-300
4	
5	
6	
8	

Order Example: - -
 - -

Customize are also available



Type: JC61

Material: C3604 Brass

SUJ2 High Carbon Chrome Bearing Steel

Type No.	L										d1	d	Ball Dia.	
	25	30	35	40	45	50	55	60	65	70				
JC61	8	●	●									8.5	11.5	2
	10	●	●									10.5	13.5	
	13				●		●					13.5	16.5	
	16			●	●		●					16.5	19.5	
	20			●	●		●					20.5	23.5	
	25			●	●		●					25.5	28.5	
	30			●	●		●					30.5	33.5	

Order Example: Type - L
JC61-8 - 30

Customize are also available