

### Type: JC28 & JC29

Material: YK30 Tool Steel

Hardness: HRC58+/-2

#### Type: JC28 (METRIC STANDARD)

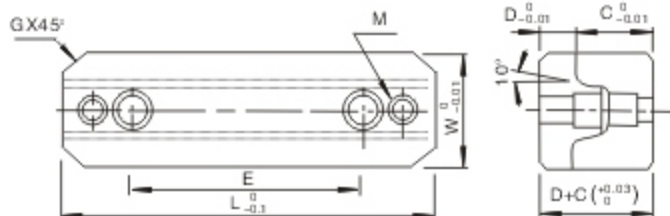
A	B	C	D	d	E	F	H	L	M	T	K	N
38	12	30	10.5	6.5	22	22	7	7	5	13	8	22
50	17	30	10.5	6.5	21.5	34	11	11	5	16	8	21.5
75	25	50	16.5	10.5	36	50	18	18	5	19	12	36
100	35.4	65	16.5	10.5	45	70	22	22	5	19	12	45
125	45	65	16.5	10.5	45	84	22	22	5	25	12	45

#### Type: JC29 (INCH STANDARD)

A	B	C	D	d	E	F	H	L	M	T	K	N
38.1	12.7	29.972	11	7	22.098	23.826	11.15	7.14	4.83	15.748	7	22.098
50.8	17.272	29.972	11	7	22.098	31.75	11.1	9.53	4.83	15.748	7	22.098
76.2	25.4	48.514	15	10	34.544	57.15	17.46	17.46	4.83	18.923	10	34.798
101.6	34.925	67.056	15	10	47.498	69.85	22.23	22.23	4.83	18.923	10	47.498
127	44.45	67.056	19	14	47.498	88.9	22.23	22.23	4.83	28.448	14	47.798

Order Example: Type - A  
JC28 - 38

Customize are also available



### Type: JC30 & JC31

Material: YK30 Tool Steel

Hardness: HRC58+/-2

#### Type: JC30 (METRIC STANDARD)

L	E	W	D	C	G	M
50	0	25	8	17.5	5	M5
100	60	30	10	22	5	M6
150	100	40	13	25	5	M8

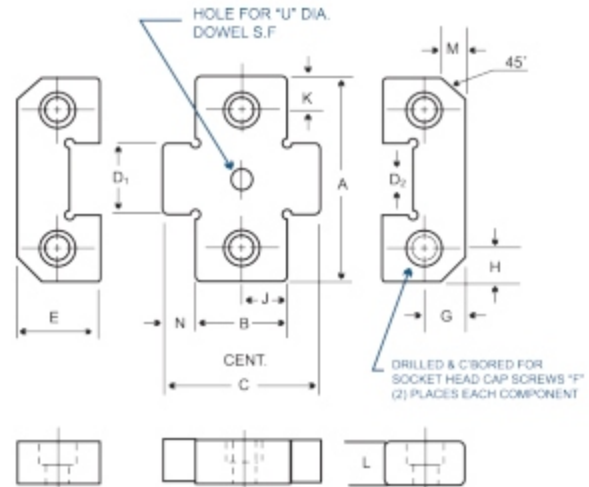
#### Type: JC31 (INCH STANDARD)

L	E	W	D	C	G	M
50.29	0	25.36	7.92	17.53	5.08	3/16"-24
101.09	63.5	31.71	9.53	22.1	5.08	1/4"-20
151.89	101.6	38.1	12.7	25.4	5.08	3/8"-16

Order Example:  -   
 -

■ Customize are also available

# Straight Block Set - X Type -



## Type: JC32 & JC33

Material: YK30 Tool Steel

Hardness: HRC58+/-2

### TYPE: JC32 (METRIC STANDARD)

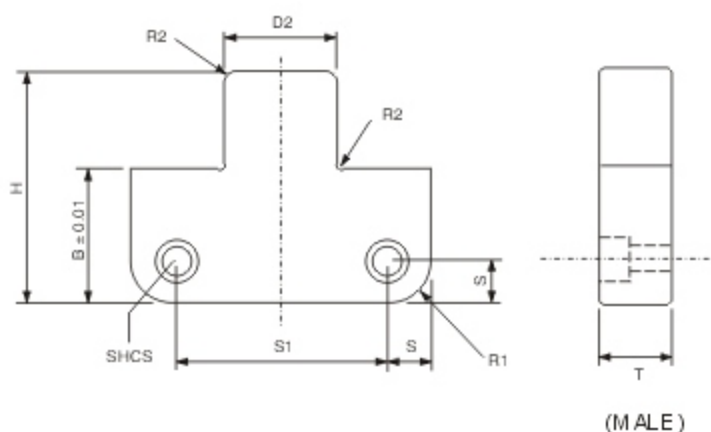
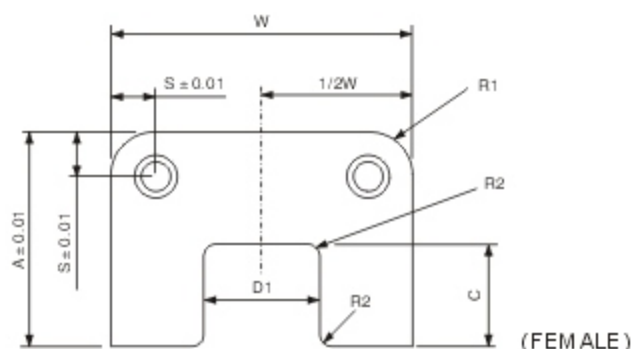
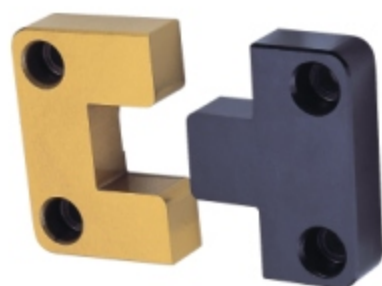
A +0.00 -0.01	B =0.1	C	D <sub>1</sub> +0.005 -0.0025	D <sub>2</sub> +0.005 -0.000	E =0.1	F	G =0.1	H	J	K	L	M	N	U DIA.	Weight (kg)
40	26 36	43 53	12	12	21.5	M6-1×20	11	8	13 18	8	16	5	8.5	6" (6D IA × 25LG D WL)	0.35 0.40
50	26 36	43 53	17	17	21.5	M6-1×20	11	8	13 18	8	16	5	8.5	6" (10D IA × 30LG D WL)	0.43 0.50
75	26 36	51 61	25	25	36	M10-1.5×25	18	12.5	13 18	12.5	19	5	14	10" (10D IA × 30LG D WL)	1.10 1.21
100	36 46	71 81	35	35	45	M10-1.5×25	22	15	18 13	15	19	5	20	10" (10D IA × 30LG D WL)	1.88 2.03
125	36 46	71 81	45	45	45	M10-1.5×30	22	20.5	18 23	20.5	25	5	20	12" (12D IA × 30LG D WL)	3.10 3.34

### TYPE: JC33 (INCH STANDARD)

A +0.0000 -0.0004	B =0.004	C	D <sub>1</sub> +0.0000 -0.0002	D <sub>2</sub> +0.0002 -0.0000	E =0.004	F	G =0.004	H =0.004	J	K	L	M	N	U DIA.	Weight (kg)
1.5000	0.850 1.350	1.470 1.970	0.5000	0.5000	0.870	1/4-20 ×3/4	0.281	0.281	0.425 0.675	0.281	0.620	0.19	0.310	2500 (1/4D IA ×1" LG. DWL)	0.31 0.37
2.0000	0.850 1.350 0.850	1.470 1.970 1.950	0.6800	0.6800	0.870	1/4-20 ×3/4	0.375	0.375	0.425 0.675 0.425	0.375	0.620	0.19	0.310	2500 (1/4D IA ×1" LG. DWL) 3750	0.41 0.49 1.03
3.0000	1.350	2.450	1.0000	1.0000	1.370	3/8-16 ×1	0.688	0.375	0.675	0.375	0.745	0.19	0.550	3750 (3/8D IA ×1-1/4" LG. DWL)	1.18
4.0000	1.350 1.850	2.890 3.390	1.3750	1.3750	1.870	3/8-16 ×1	0.875	0.625	0.675 0.925	0.625	0.745	0.50	0.770	3750 (3/8D IA ×1-1/4" LG. DWL)	1.95 2.15
5.0000	1.350 1.850	2.890 3.390	1.7500	1.7500	1.870	1/2-13 ×1-1/4	0.875	0.750	0.657 0.925	0.750	1.120	0.50	0.770	5000 (1/2D IA ×2" LG. DWL)	3.67 4.03

Order Example:  -   
 -

■ Customize are also available



### Type: JC34

Female Material: SKD11 Tool Steel  
 Surface Hardness: HRC80+/-2  
 (Titanium Nitriding Coated)

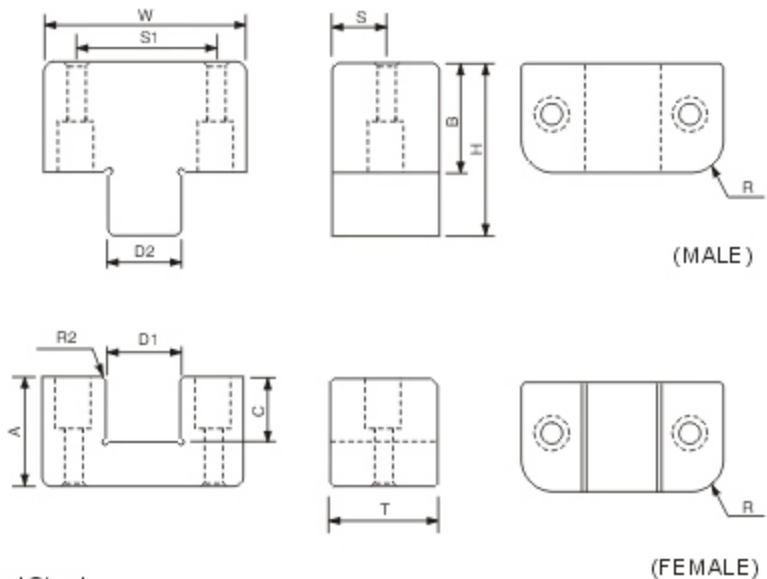
Male Material: YK30 Tool Steel  
 Hardness: HRC58+/-2  
 (Black Oxidized)

(INCH STANDARD)

Type No.	W $0_{-0.0005}$	T $\pm 0.001$	A $\pm 0.001$	B $\pm 0.010$	C	D1 $0_{+0.0003}$	D2 $0_{-0.0003}$	H	R1	POCKET RADIUS	R2	S $\pm 0.01$	S1	SHCS
JC34-37	1.0000	0.375	1.125	0.875	0.53	0.5000	0.4999	1.37	0.22	3/16	0.06	0.250	0.500	#10-32X1/2"
JC34-49	1.2500	0.490	1.125	0.875	0.66	0.5000	0.4999	1.50	0.22	3/16	0.06	0.250	0.750	#8-32X5/8"
JC34-50C	1.5000	0.500	0.875	0.875	0.56	0.5630	0.5629	1.40	0.22	3/16	0.06	0.250	1.000	#8-32X5/8"
JC34-50	2.0000	0.500	1.375	0.875	0.66	0.7500	0.7499	1.50	0.22	3/16	0.06	0.312	1.376	#10-32X5/8"
JC34-75	3.0000	0.750	1.875	0.875	1.13	1.2500	1.2499	1.96	0.28	1/4	0.12	0.375	2.250	1/4-20X3/4"
JC34-100	4.0000	1.000	2.375	1.375	1.25	1.5000	1.4999	2.59	0.53	1/2	0.12	0.500	3.000	3/8-16X1"
JC34-125	5.0000	1.250	2.875	1.375	1.63	2.0000	1.9999	2.96	0.53	1/2	0.12	0.625	3.750	1/2-13X1 1/4"
JC34-150	6.0000	1.500	2.875	1.375	1.75	2.5000	2.4999	3.09	0.53	1/2	0.12	0.625	4.750	1/2-13X1 1/2"

Order Example:

Customize are also available



### Type: JC35

Female Material: SKD11 Tool Steel  
 Surface Hardness: HRC80+/-2  
 (Titanium Nitriding Coated)

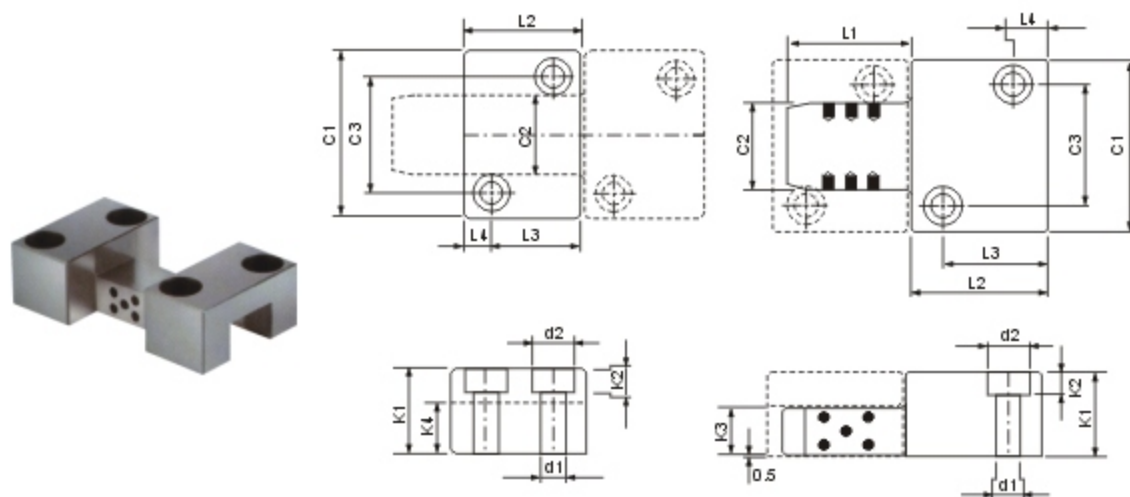
Male Material: YK30 Tool Steel  
 Hardness: HRC58+/-2  
 (Black Oxidized)

(INCH STANDARD)

Type No.	W 0 -0.0005	T 0 -0.002	A +0 -0.002	B +0 -0.002	C	OVERALL HEIGHT	D1 +0.0002 0	D2 0 -0.0002	H	R	R2	S ± 0.010	S1 ± 0.010	SHCS	
														MALE(2)	FEMALE(2)
JC35-125	1.250	0.625	0.625	0.500	0.414	1.125	0.438	0.438	0.875	0.26	0.059	0.312	0.875	#6-32X1/2"	#6-32X5/8"
JC35-150	1.500	0.875	0.875	0.750	0.531	1.625	0.500	0.500	1.25	0.26	0.059	0.437	1.000	#8-32X3/4"	#8-32X3/4"
JC35-200	2.000	1.000	1.125	0.750	0.664	1.875	0.750	0.750	1.375	0.38	0.059	0.500	1.375	#10-32X3/4"	#10-32X1"
JC35-300	3.000	1.125	1.500	0.750	0.787	2.250	1.125	1.125	1.500	0.51	0.098	0.562	2.250	1/4-20X3/4"	1/4-20X1 1/2"

Order Example:

■ Customize are also available



### Type: JC36

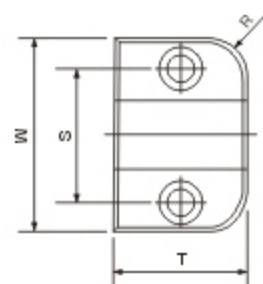
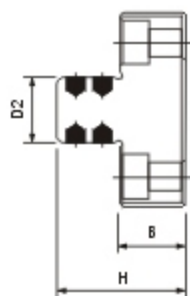
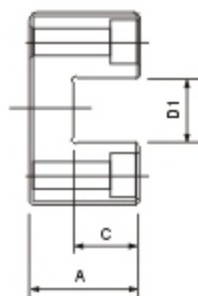
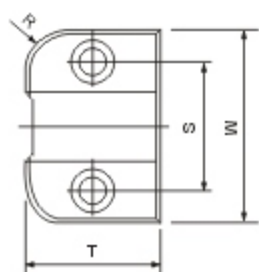
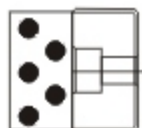
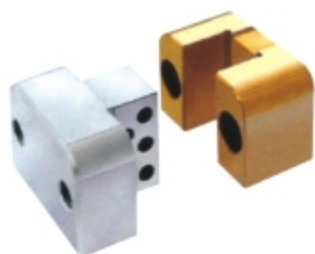
Material: YK30 Tool Steel+Graphite

Hardness: HRC58+/-2

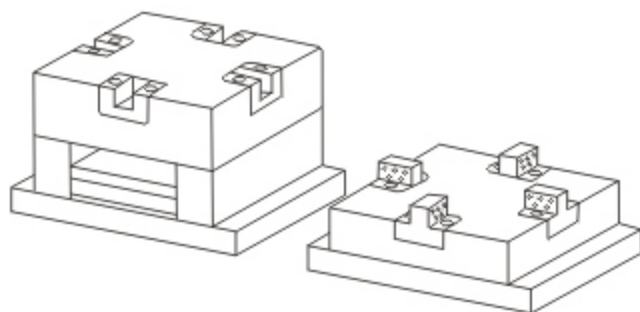
C2 g5	L1	K4	K3	K2	K1	d2	d1	L4	L3	L2 <sub>0.5</sub> 0.7	C3	C1
16	20	12	11	6.8	20	11	6.6	7	15	22	26	40
	40											
20	25	14	13	6.8	22	11	6.6	7	19	27	31	45
	50											
25	32	15	14	6.8	25	11	6.6	9	27	36	35	50
	63											
32	40	20	19	9.0	32	15	9.0	11	35	46	45	63
	80											
40	50	23	22	11.0	36	18	11.0	15	40	56	60	85
	100											
50	56	25	24	13.0	40	20	14.0	18	48	66	74	100
	112											
125	140	63	62	21.0	112	32	22.0	25	135	150	110	160

Order Example:  -  -   
 -  -

■ Customize are also available



### Diagram



### Type: JC37

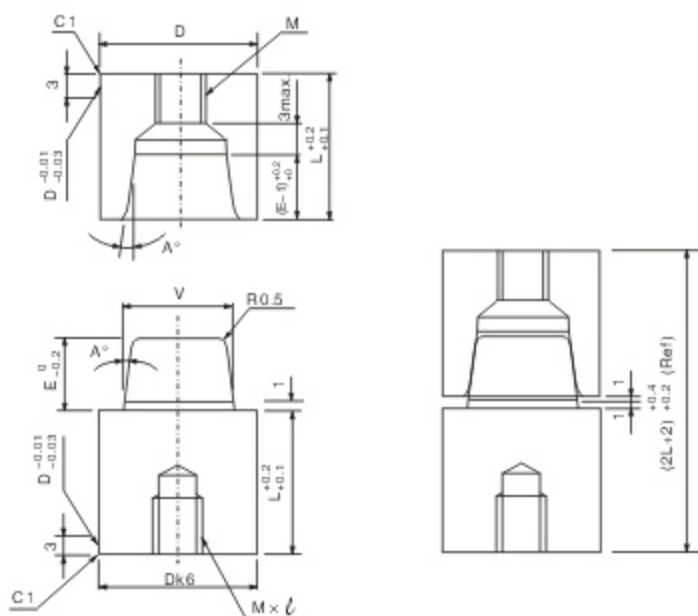
Female Material: SKD11 Tool Steel  
 Surface Hardness: HRC80+/-2  
 (Titanium Nitriding Coated)

Male Material: YK30 Tool Steel+Graphite  
 Hardness: HRC58+/-2

W 0 -0.01	T 0 -0.1	A 0 -0.05	B 0 -0.05	C ±0.1	D1 +0.010 +0.005	D2 0 -0.005	H 0 -0.1	R	S	SHCS
35	26	25	15	14.5	11	11	29	8	23	M5
45	30	25	15	14.5	15	15	29		30	M6
55	36	30	20	19.5	20	20	39		37.5	M8
75	36	35	20	24.5	30	30	44		52	M10
100	45	60	20	39.5	40	40	59		70	M10
125	50	60	25	54.5	60	60	79		92.5	M14

Order Example:  -   
 -

■ Customize are also available



## Type: JC38

Material: SKD11 Tool Steel

Hardness: HRC58+/-2

D	Dk6	A°	L	V	E	M x l
13	+0.012	5°	14	7	6	M4 x 10
16	+0.001		14	10	6	M5 x 10
20	+0.015 +0.002		19	13	9	M6 x 12
25			24	16	12	M8 x 16
30			29	20	15	M10 x 20
32	+0.018		29	20	15	M10 x 20
35	+0.002		34	24	18	M12 x 24

Order Example:  -   
 -

■ Customize are also available