

Type: JC19

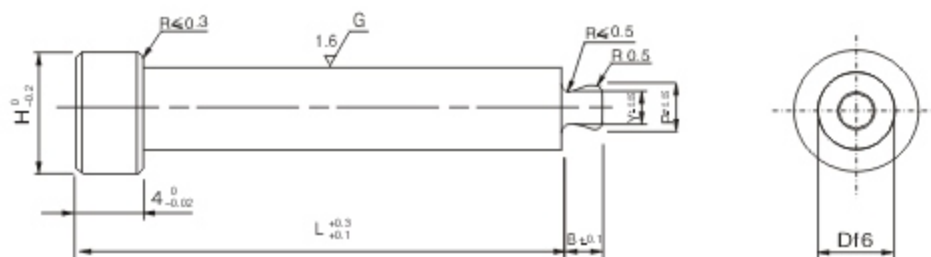
Material: *SUJ2 High Carbon Chrome Bearing Steel*

Hardness: HRC58+4

D	H	M	ℓ	d	d Tolerance	d1	d1 Tolerance	L
17	6	M6	12	12	-0.016 -0.027	12	+0.018 +0.007	50-300
20	8	M10	20	16				
25	10	M12	25	20	-0.020 -0.033	20	+0.021 +0.008	
30	12	M14	30	25				
35	14	M16	35	30	-0.025 -0.041	30	+0.025 +0.009	
40	16			35				
45	18			40				

Order Example: Type - D - L - L1
 JC19 - 17 - 50 - From Request

Customize are also available



Type: JC20

Material: SKD61-H13-Hot Work Die Steel

Hardness: HRC 46 \pm 5, Through Hardened

H	B	P	Y	D	L											
					15	20	25	30	35	40	45	50	60	70	80	
4	2	1.5	1.0	2	●	●	●	●	●	●						
5		2.3	1.8	3	●	●	●	●	●	●	●					
6	2.5	2.8	2.3	4			●	●	●	●	●	●	●	●	●	●
7	3	3.3	2.8	5			●	●	●	●	●	●	●	●	●	●
8		3.8	3.0	6				●	●	●	●	●	●	●	●	●
10	4	5.8	5.0	8				●	●	●	●	●	●	●	●	●

Order Example: - -
 - -

■ Customize are also available



※PLEASE SPECIFY THE HEAD SHAPE WHEN ORDERING

<p>A</p> <p>$0.1 \leq G < P/2$ Request 0.1mm</p>	<p>B</p> <p>$20 \leq K \leq 60$ Request 1°</p>	<p>C</p> <p>Request 0.1mm $0 \leq K \leq 45$ Request 1°</p>	<p>D</p> <p>$0.2 \leq Q < P/2$ Request 0.1mm</p>
---	--	---	---

Type: JC21 & JC22

Material: JC-21-SKD61-H13-Hot Work Die Steel

JC-22-SKH51-HSS-High Speed Steel

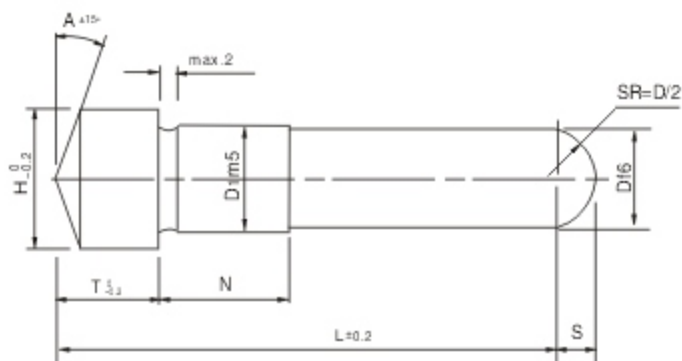
Hardness: JC-21-HRC 48+/-4, Through Hardened

JC-22-HRC 58+/-4, Through Hardened

Shape	H	0.01mm Increment		0.1mm Increment
		L	P	T
A B C D	5	12.00~100.00		2.00~3.00
	6			2.50~4.00
	7			3.00~5.00
	8			4.00~6.00
	9			4.00~7.00
	10			5.00~8.00
	11			6.00~9.00
	12			7.00~10.00
	13	8.00~11.00		
	15	10.00~13.00		
				1.5~20.0
				$T \leq L - 10$

Order Example: - - - - -
 - - - - -

■ Customize are also available



Type: JC23

Material: SUJ2 High Carbon Chrome Bearing Steel

Hardness: HRC58+4

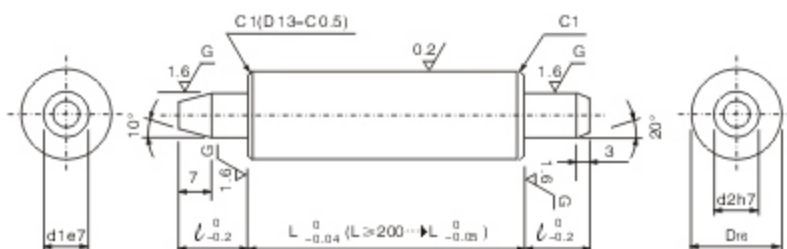
D1	m5	D	f6	T	H	S	0.1mm Increment	A	L
							N	1° Increment	
4	+0.009 +0.004	4	-0.010 -0.018	5	7	2	2 ≤ N N ≤ L-T-1 or N=0	0-30	50-300
5		8			2.5				
6		9			3				
8	+0.012 +0.006	8	-0.013 -0.022	10	11	4			
10	10	13	5						
12	12	15	6						
13	+0.015 +0.007	13	-0.016 -0.027	13	16	6.5			
15		15			18	7.5			
16		16			19	8			
20	+0.017 +0.008	20	-0.020 -0.033	15	23	10			
25		25			28				
30		30			35				
32	+0.020 +0.009	32	-0.025 -0.041	15	37	10			
35		35			40				
40		40			45				

Order Example: - - - - -
 - - - - -

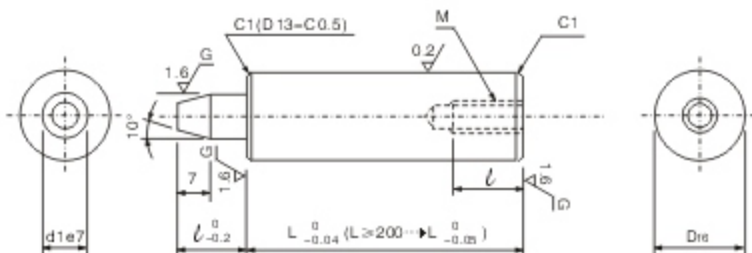
Customize are also available



JC24



JC25



D	M x Pitch
13 - 16	M6 x 1.0
20 - 25	M8 x 1.25
30 - 35 - 40	M10 x 1.5

Type: JC24 & JC25

Material: SUJ2 High Carbon Chrome Bearing Steel
Hardness: HRC58+4

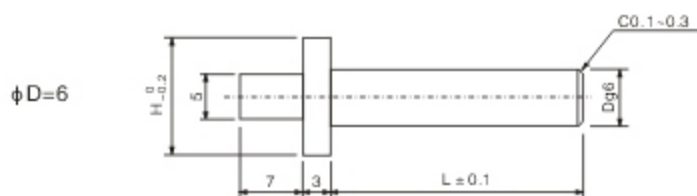
D	L	D ₁₆	d1e7	d2 h7	l
13	40-95	13	8	8	12
	100-125				
	130-150				
16	50-95	16	10	10	15
	100-125				
	130-150				
20	50-95	20	10	10	15
	100-125				
	130-150				
25	50-95	25	10	10	15
	100-125				
	130-150				
30	50-125	30	20	20	20
	130-155				
	160-200				
	205-230				
	235-260				
	265-300				
35	50-125	35	20	20	20
	130-155				
	160-200				
	205-230				
	235-260				
40	90-125	40	20	20	20
	130-155				
	160-200				
	205-230				
	235-260				
	265-300				

Order Example: - -
 - -

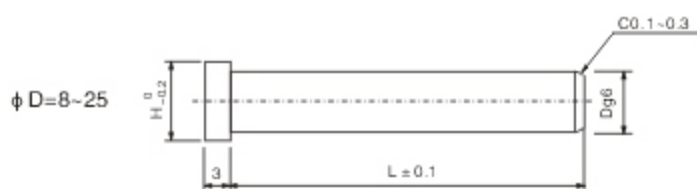
Customize are also available



JC26



JC27



Type: JC26 & JC27

Material: SKH51-HSS- High Speed Steel

Hardness: HRC58+/-4 Through Hardened

Dg6		L 1mm Increment	H
6	-0.004 -0.012	10-50	8
8	-0.005		10
10	-0.014		13
13	-0.006	10-70	16
16	-0.017		19
20	-0.007	20-80	23
25	-0.020		28

Order Example: - -
 - -

■ Customize are also available