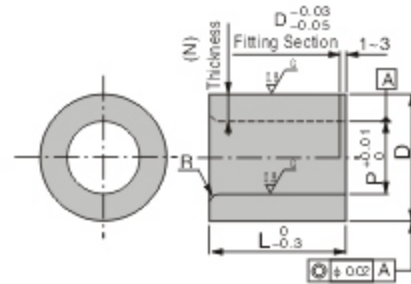
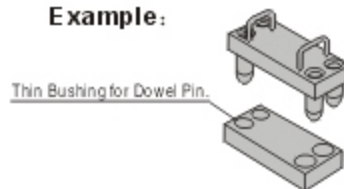




**TYPE: JFA24
(Regular)**



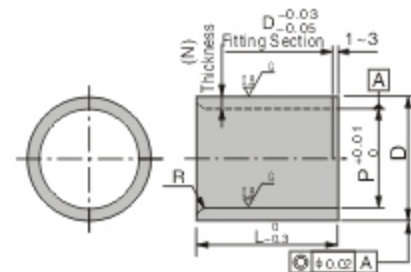
Example:



Thin Bushing for Dowel Pin.



**TYPE: JFA25
(Thin Thickness)**



Type: JFA 24 & JFA 25

Material: SUJ2 - 1.3505 - High Carbon Chrome Bearing Steel

Surface Treatment: Black Oxidized & Electrolyze nickel plating by option

Hardness: HRC56~60 Through High Frequency Quenching

Type	D	D Tolerance μm	P 0.01mm Increments	L 0.1mm Increments	(N) Thickness	R
JFA24	5	± 0.012	2.00~2.50	5.0~6.0	1.25~1.50	0.8
	7	+0.024	2.00~3.50	5.0~8.0	1.75~2.50	
	8	+0.015	3.00~4.50	5.0~13.0	1.75~2.50	
	10	+0.029	4.00~6.50	5.0~20.0	1.75~3.00	2.0
	12		6.00~8.50			
	15		8.00~10.50			
	18	+0.018	10.00~12.50	10.0~40.0	2.25~3.50	
	20	12.00~13.50	2.75~4.00			
	22	+0.035	12.00~13.50		3.25~4.00	
	25		13.00~15.50		4.25~5.00	
	26	+0.022	15.00~16.50	4.75~6.00		
	30	+0.035	16.00~20.50	4.75~5.50		
35	± 0.012		20.00~25.00	12.0~60.0	4.75~7.00	3.0
					5.00~7.50	

Type	D	D Tolerance μm	P 0.01mm Increments	L 0.1mm Increments	(N) Thickness	R
JFA25	7	+0.015	3.51~5.00	5.0~8.0	1.00~1.74	0.5
	8		4.51~6.00	5.0~13.0		
	9		4.51~6.50			
	10	+0.008	6.51~8.00	5.0~20.0	1.00~1.74	
	11		8.00~9.00		1.00~1.50	
	12		8.51~9.00		1.50~1.74	
	13	+0.018	8.51~9.00	10.0~40.0	1.50~2.24	
	14		9.00~11.00		1.50~2.50	
	15		+0.007		10.51~12.00	1.50~2.24
	17	+0.021	10.51~13.00	10.0~40.0	2.00~3.24	
	18		12.51~14.00		2.00~2.74	
	20		+0.008		13.51~15.00	2.50~3.24
	22	+0.021	13.51~17.00	10.0~40.0	2.50~4.24	
	25		15.51~19.00		3.00~4.74	

Order Example: - - - -
 - - - -

■ Customize are also available