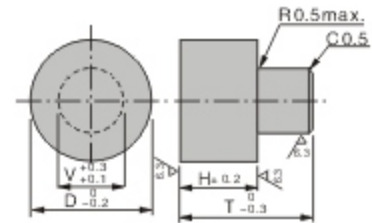


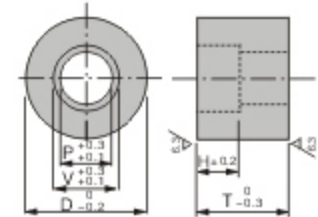
Setting Noses & Plastic Washers



TYPE: JFA57 & JFA58
(Nosefree type)



TYPE: JFA59 & JFA60
(Counterbore hole free type)



Type: JFA57 ~ JFA60

Material: JFA57 & JFA59 - Polyacetal

JFA58 & JFA60 - MC Nylon (Standard grade - Blue)

Type	D	V (0.5mm increments)	H (0.5mm increments)	T (0.5mm increments)
JFA57 JFA58	6~10 (0.5mm increments)	2~28	2~28	3~10
				10.5~20
				20.5~30
	3~10			
	10.5~20			
	20.5~30			
	21~30 (1mm increments)	10~28	2~38	3~10
	31~40 (1mm increments)	15~38		10.5~20
				20.5~30
			30.5~40	
	41~50 (1mm increments)	20~48	2~48	10~20
				20.5~30
30.5~40				
40.5~50				
51~60 (1mm increments)	30~58	10~20		
		20.5~30		
		30.5~40		
				40.5~50

Type	D	V (0.5mm increments)	P (0.5mm increments)	H (0.5mm increments)	T (0.5mm increments)	
JFA59 JFA60	10~20 (0.5mm increments)	5~55	3~53	1~48	3~10	
					10.5~20	
					20.5~30	
	30.5~40					
	40.5~50					
	3~10					
	21~30 (0.5mm increments)	31~40 (1mm increments)	5~55	3~53	1~48	10.5~20
						20.5~30
						30.4~40
	40.5~50					
	3~10					
	10.5~20					
41~50 (1mm increments)	51~60 (1mm increments)	5~55	3~53	1~48	20.5~30	
					30.5~40	
					40.5~50	
3~10						
10.5~20						
20.5~30						
30.5~40						
40.5~50						
					3~10	
					10.5~20	
					20.5~30	
					30.5~40	
					40.5~50	

Order Example: - - - - -
 - - - - -

■ Customize are also available