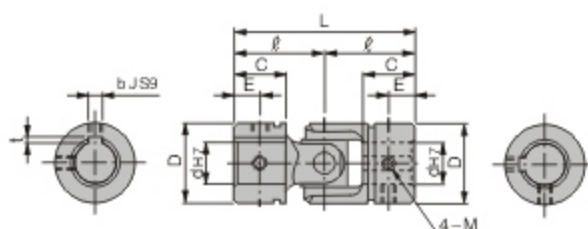
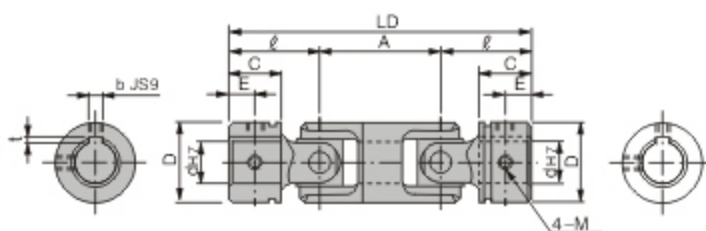




TYPE: JFA33
(Standard)



TYPE: JFA34
(Increasing Length)



Type: JFA33 & JFA34

Material: SCM415 - 1.7262 - Chrome Molybdenum Steel (Through Carburizing)

Motion Data:

① Condition variables (formula)

Calculation condition variable =

$$\text{Revolutions (min}^{-1}\text{)} \times \text{Angle (}^\circ\text{)} \times \text{Torque (N} \cdot \text{m)}$$

② Number of Rotations (min⁻¹)

No. of revolutions \times Angle coefficient $<$ Allowable condition variable

= Angle Coefficient Table =

Angle	5 or less	10	15	20	25	30
Angle Coefficient	1.00	1.05	1.18	1.43	1.82	2.50

Type	D	d ₁	Standard	Increasing length		ℓ	C	E	b	t	M (Rough Bolt)
			L	LD	A						
JFA33 JFA34	19	10	42	67.5	25.5	21	12	6	3	1.4	M5
	23	12	52	83	31	26	15	7.5	4	1.8	M5
	26	14	59	94.5	35.5	29.5	17	8.5	5	2.3	M6
	30	16	74	117.5	43.5	37	22	11	5	2.3	M6
	36	20	87	139	52	43.5	25	12.5	6	2.8	M6

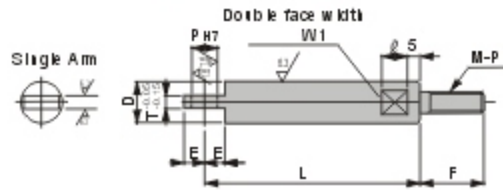
Order Example: -

-

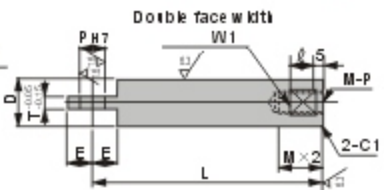
■ Customize are also available



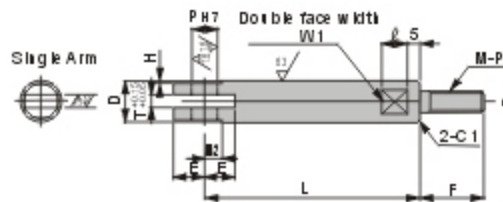
TYPE: JFA77 (Male Thread)



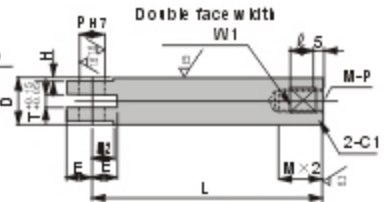
TYPE: JFA79 (Female Thread)



TYPE: JFA78 (Male Thread)



TYPE: JFA80 (Female Thread)



Type: JFA77 ~ JFA 80

Material: JFA77 ~ JFA80 - S45C - 1.1191 - Carbon Steel for machinery structures
 SUS304 - 1.4301 - Stainless Steel by option

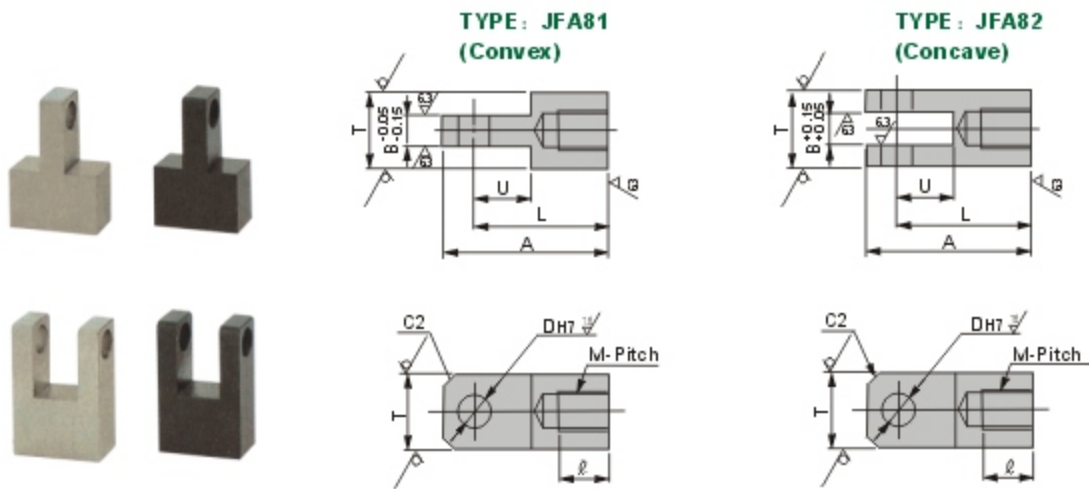
Surface Treatment: JFA77 & JFA79 - Black Oxidized

Type	M-Pitch	1mm Increments				T Selection	D	ℓ	W ₁	H	W ₂
		L	F	E	*P						
JFA77 JFA78	4-0.7	20~50	10~15	3~12	3~6	5	10	8	8	0.5	6
	5-0.8				3~8						
	6-1.0	10~20	3~8	5 6	12	10	10	1	7		
	8-1.25	20~90	10~25	5~20	3~8	5 6 9 *10 *12	16	10	13	1.5	9
	10-1.5				*3~10						
					3~8						
*3~12											
16-2.0	10~50	3~16	5 6 9 10 12*16	25	10	17					

Type	M-Pitch	1mm Increments			T Selection	D	ℓ	W ₁	H	W ₂
		L	F	E						
JFA79 JFA80	5-0.8	30~60	3~12	3~5	5 *6	10	8	8	0.5	6
	6-8.0			*3~6						
	8-1.25	30~100	5~20	3~6	5 6 9 *10 *12	16	10	13	1.5	9
				*3~8						
				*3~10						
10-1.25	3~8	5 6 9 10 12	18	10	14					
10-1.5	*3~12									

Order Example: - - - - - -
 - - - - - -

■ Customize are also available



Type: JFA81 & JFA82

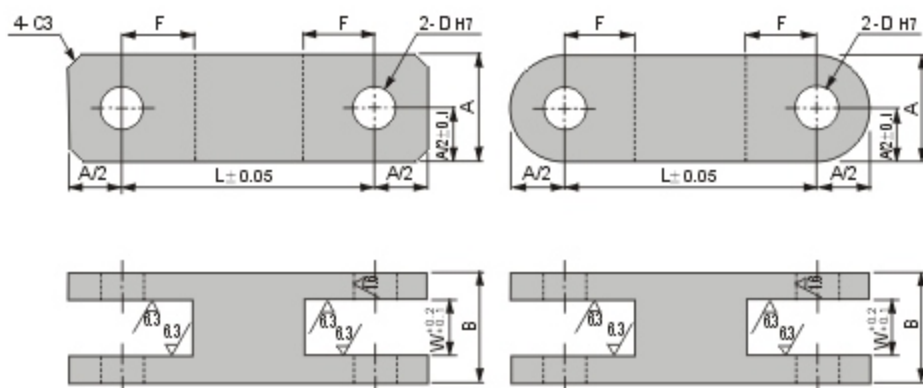
Material: S45C - 1.1191 - Carbon Steel for machinery structures

Surface Treatment: Black oxidized & Electrolyze nickel plating by option

M-Pitch	B Selection	DH7	U	A	L	T
3-0.5	4 • 5	4	10	26	20	10
4-0.7	5 • 6	5		31	25	
5-0.8	5 • 6					
6-1.0	4 • 6					
8-1.0	5 • 8	8	15	43	34	16
8-1.25	5 • 8					
10-1.25	6 • 10	10				20
10-1.5	6 • 10					
12-1.25	8 • 10	12	20	50	40	22
12-1.5	8 • 10					
14-1.5	10 • 12			62	50	25
16-1.5	10 • 12			67	55	
18-1.5	12 • 14	69	28			

Order Example: - - -
 - - -

■ Customize are also available



TYPE: JFA83
(Tetragon)

TYPE: JFA84
(Round)

Type: JFA83 & JFA84

Material: SS400 - Rolled Steel for general construction

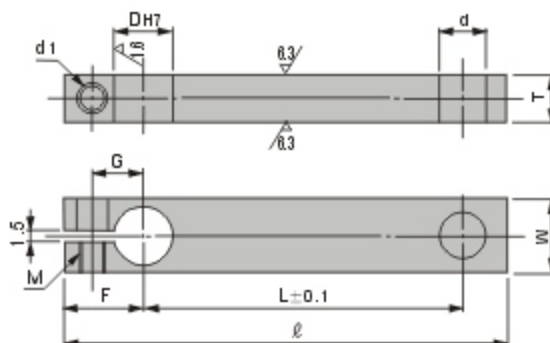
Surface Treatment: Black oxidized & Electrolyze nickel plating by option

DH7		L 5mm Increments	W Selection	A	B	F
10	$\begin{matrix} +0.015 \\ 0 \end{matrix}$	50~120	12 16 19	28	28	20
12	$\begin{matrix} +0.018 \\ 0 \end{matrix}$	60~120		32	32	
16				38	38	25

Order Example: - - - -

- - - -

■ Customize are also available



Type: JFA85 & JFA86

Material: JFA85 - S45C - 1.1191 - Carbon Steel for machinery structures

JFA86 - SU S304 - 1.4301 - Stainless Steel

Surface Treatment: JFA85 - Black oxidized

DH7	d Selection	L 1mm increments	ℓ	W	F	G	Applicable Bolts M	d1	T	
8	5	30~150	L+21	12	14	8	M6-12	6.6	10	
	6		L+22							
	8		L+24							
10	5		L+23	16	15	9				M6-15
	6		L+24							
	8		L+25							
12	10		L+27	18	16	10	M6-20			
	5		L+23							
	6		L+24							
	8		L+25							
15	12		L+30	22	18	12			M6-25	
	6		L+27							
	8	L+28								
	10	L+30								
	12	L+32								
20	14	L+34	28	22	15	M8-30				
	8	L+32								
	10	L+34								
	12	L+35								
	14	L+36								
25	16	L+38	32	25	18		M8-30			
	10	L+36								
	12	L+37								
	14	L+38								
	16	L+40								
	18	L+42						9	15	

Order Example: - - -
 - - -

■ Customize are also available