

### Type: JFA29

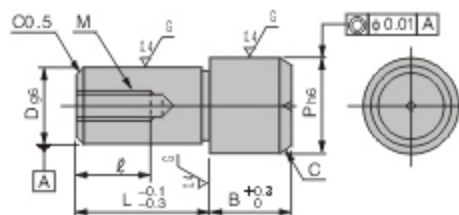
Material: S45C - 1.1191 - Carbon Steel for machinery structures

Surface Treatment: Black oxidized & Electrolyze nickel plating by option

Dg6		L 0.1mm Increments	A	B	(d)	T	(N)	M (Coarse Thread)
6	-0.004 -0.012	15.0~100.0	10	8	5.8	5	1.5	M3
8	-0.005 -0.014	20.0~100.0	13	10	7.8			M5
10		25.0~100.0	16	13	9.8			M6
12	-0.006 -0.017	25.0~200.0	18	14	11.8			M8
13		30.0~200.0	24	21	12.8			M10
15					14.8			
16					15.8			
20		-0.007 -0.020	40.0~200.0	27	23			19.8

Order Example:  -  -  -   
 -  -  -

■ Customize are also available



※Tolerance for "P"

P	h6
6.50~10.00	0 -0.009
10.01~18.00	0 -0.011
18.01~30.00	0 -0.013

### Type: JFA35

Material: SKS3 - 1.2419 - Alloy Tool Steel  
Hardness: HRC 60~63 Through hardening

D	Tolerance g6	P 0.1 mm Increments	L	B	M (Coarse Thread)	l	C
6	-0.004 -0.012	6.50~10.00	10	5	M3	5	1.0
8	-0.005 -0.014	9.00~13.00	12	6	M5	8	1.5
10		11.00~15.00	16	10			2
12	-0.006 -0.017	13.00~16.00	20	20	M8	12	3
13		14.00~18.00	22	22			
16		17.00~25.00	24	25			
20	-0.007 -0.020	22.00~30.00	32	30			

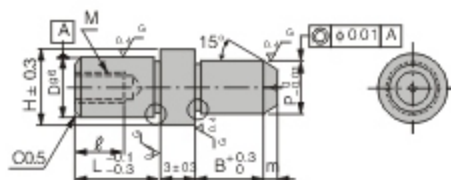
Order Example:  -  -   
 -  -

■ Customize are also available

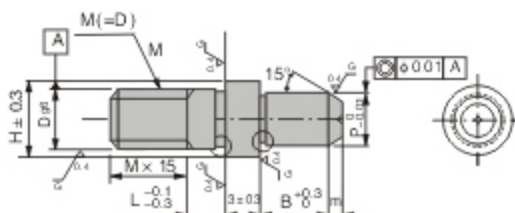
# Locating Pins - Shoulder Head -



**TYPE: JFA36**  
(Inner Thread)



**TYPE: JFA37**  
(Outside Thread)



**Type: JFA36 & JFA37**

Material: SKS3 - 1.2419 - Alloy Tool Steel  
Hardness: HRC60~63 Through hardening

※Tolerance for JFA36 & JFA37

D	g6	m	h	(W)	ℓ	M(Threading)	
						JFA36	JFA37
3	-0.002 -0.008	1	6	1	-	-	M3
4				-		M4	
5	-0.004 -0.012	2	8	1.5	5	-	M5
6				1.8		M3	M6
8	-0.005 -0.014	3	11	2.2	10	M5	M8
10			13	3			M10
12	15		3.2	M12			
13	-0.006 -0.017	4	16	3.5	12	M8	-
16			19	4			M16
20	-0.007 -0.020	5	23	5.5			M20

Type	D	0.01mm P Increments	L	B
<b>JFA36</b>	6	4.00~7.00	10	5
	8	5.00~9.00	15	6
	10	7.00~11.00		8
	12	7.00~12.00		
	13	8.00~13.00	22	
	16	13.00~16.00		
	20	16.00~20.00	30	

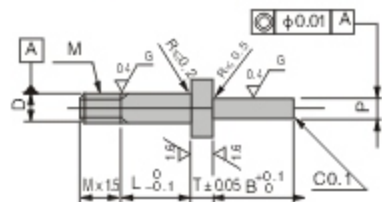
Type	D	0.01mm P Increments	L	B
<b>JFA37</b>	3	2.00~4.00	2	5
	4	2.00~5.00		3
	5	3.00~6.00	8	
	6	4.00~7.00		
	8	5.00~9.00	5	10
	10	7.00~11.00		
	12	7.00~12.00	8	
	16	13.00~16.00		
	20	16.00~20.00	10	15

Order Example:  -  -   
 -  -

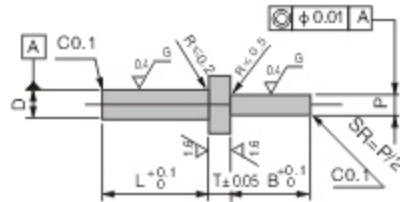
■ Customize are also available



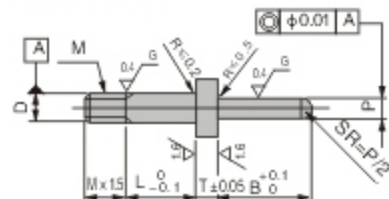
**TYPE: JFA38**



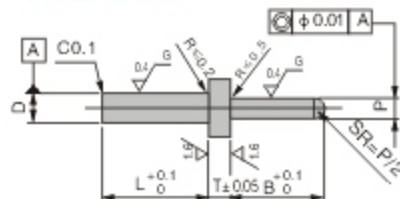
**TYPE: JFA39**



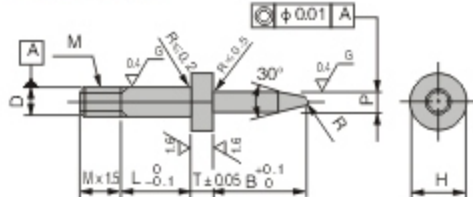
**TYPE: JFA40**



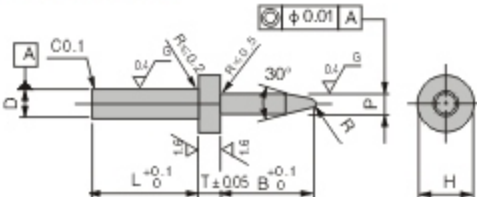
**TYPE: JFA41**



**TYPE: JFA42**



**TYPE: JFA43**



**Type: JFA38 ~ JFA43**

Material: SUS304 - 1.4301 - Stainless Steel

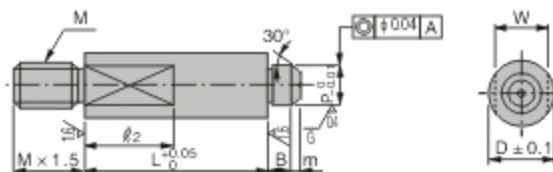
D	D Tolerance		L Increments	P Increments	P Tolerance	B Increments	H Increments	T Increments	R	M
	JFA38 JFA40 JFA42	JFA39 JFA41 JFA43 (m6)								
1	0 -0.005		2.0~5.0	1.0~3.0	0 -0.01	1.0~10.0	1.1~3.0	1.0~10.0	0.2	-
2			+0.008 +0.002	1.0~4.0		2.1~7.0	M2			
3			0.0~10.0	1.5~6.0		3.1~8.0	1.0~30.0	0.3	M3	
4			+0.012 +0.004	2.0~7.0		4.1~9.0	0.4	M4		

Order Example:  -  -  -  -  -  -   
 -  -  -  -  -  -

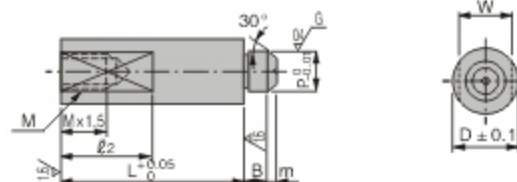
■ Customize are also available



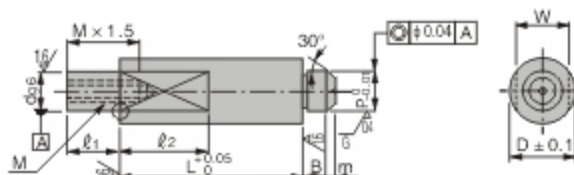
**TYPE: JFA44  
(Male Thread Type)**



**TYPE: JFA45  
(Female Thread Type)**



**TYPE: JFA46  
(Inlay Type)**



### Type: JFA44 ~ JFA46

Material: S45C - 1.1191 - Carbon Steel for machinery structures

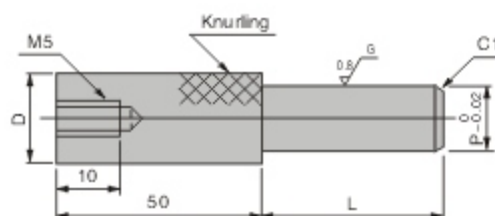
Surface Treatment: Black oxidized & Hard chrome plating by option

D	L 0.01mm Increments	P 0.01mm Increments	B Selection	m	d	M Coarse thread	l <sub>1</sub>	W	l <sub>2</sub>
6	10.00~50.00	3.00~4.00	2	1	-	M3	-	5	8
8		3.00~6.00		2	6		6	7	
10	20.00~80.00	4.00~8.00	3	2	8	M5	6	8	10
12		4.00~10.00	4		10			10	
15		4.00~10.00	5	3	12	M8	9	13	
20		5.00~10.00	17						

Order Example:  -  -  -  -  -

■ Customize are also available

-  -  -  -  -



**Type: JFA56**

Material: S45C - 1.1191 - Carbon Steel for machinery structures

D	P	L
	0.01 mm Increments	1mm Increments
10	2.00~8.00	5~40
12	4.00~10.00	
16	8.00~14.00	
20	10.00~18.00	
25	15.00~23.00	

Order Example:  -  -  -   
 -  -  -

■ Customize are also available