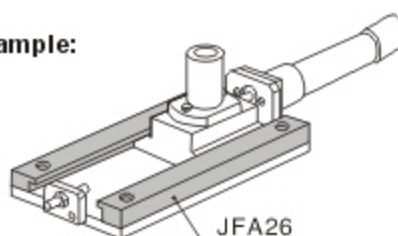


Example:



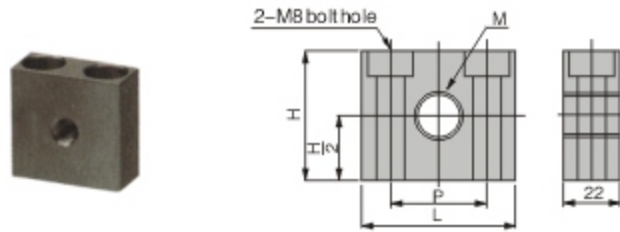
Type: JFA26

Material: S45C - 1.1191 - Carbon Steel for machinery structures
Surface Treatment: Electrolyze nickel plating by option

B	A Selection	S Selection	W	T	X	Y	d1	d2	h
15	40	5	5	10	5	5	8	4.5	4.5
	60								
	80								
	100								
20	60	8 10	5	15	7	7	9.5	5.5	5.5
	80								
	100								
	120								
25	80	10 12 15	5	20	10	10	11	6.5	6.5
	100								
30	80	12 15 20	5	25	10	10	14	9	9
	100								

Order Example: - - - -
 - - - -

■ Customize are also available



Type: JFA47

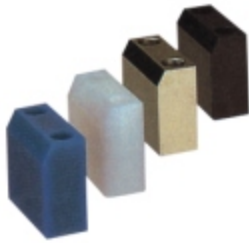
Material: SS400 - Rolled Steel for general construction

Surface Treatment: Zinc galvanizing

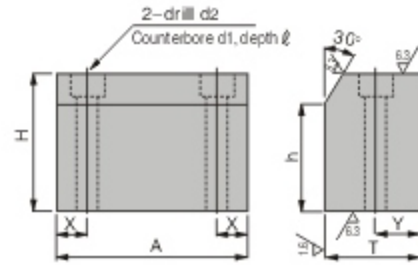
M	H Selection	M (Coarse Thread)	L	P
6	30	6×1.0	45	24
8		8×1.25		
10	50	10×1.5	50	28
12		12×1.75		

Order Example: - -
 - -

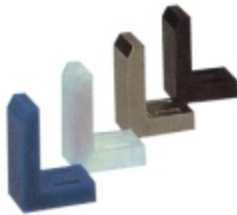
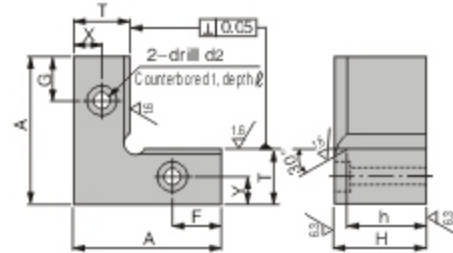
■ Customize are also available



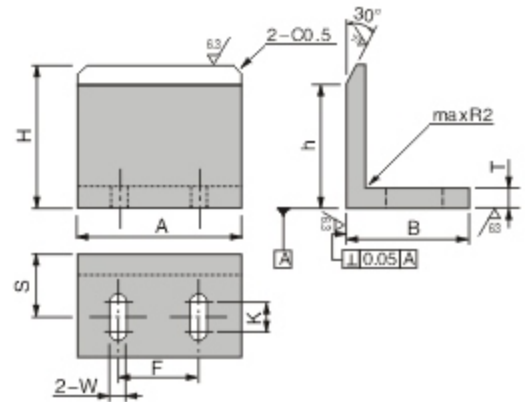
TYPE: JFA48
(Straight Shape)



TYPE: JFA49
(L Shape)



TYPE: JFA50
(Angle Shape)



Type: JFA48 ~ JFA50

Material: S45C - 1.1191 - Carbon Steel for machinery structures

Surface Treatment: Black oxidized & Electrolyze nickel plating by option

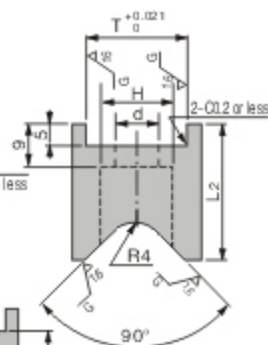
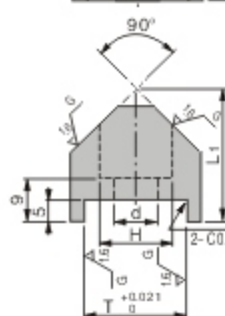
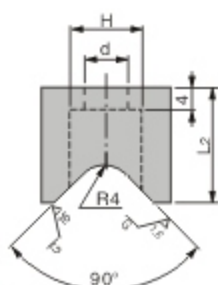
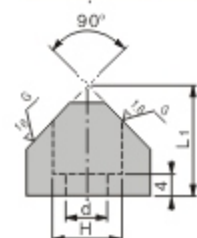
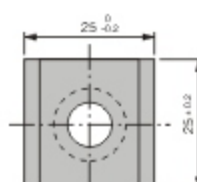
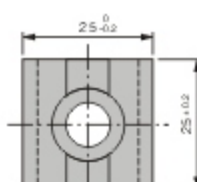
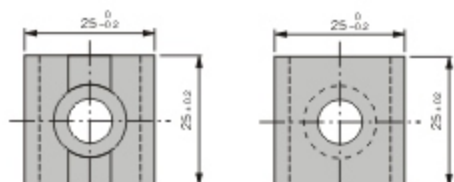
Type	A Selection	H 5mm Increments	T	h	X	Y	d1	d2	ℓ
JFA48	20 30 40 50	10 ~ 30	12	H-5	5	5	6.5	3.5	3.5
	20 30 40 50		15		5	6	8	4.5	4.5
	30 40 50 60		20		7	9	9.5	5.5	5.5
	30 40 50 60		25		8	11	11	6.5	6.5
	40 50 60		30		11	14	14	9	9

Type	A Selection	H 5mm Increments	T	h	F	G	X	Y	d1	d2	ℓ
JFA49	20 30 40 50	10 ~ 30	12	H-5	5	5	5	5	6.5	3.5	3.5
	20 30 40 50		15		5	5	6	6	8	4.5	4.5
	30 40 50 60		20		7	7	9	9	9.5	5.5	5.5
	30 40 50 60		25		8	8	11	11	11	6.5	6.5
	40 50 60		30		11	11	14	14	14	9	9

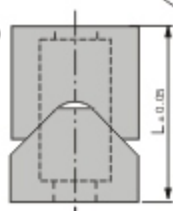
Type	A Selection	H 10mm Increments	T	h	F	B	S	W	K
JFA50	20	20 ~ 60	8	H-5	11	30	19	3.5	8
	30		10		16	40	25	4.5	10
	40		10		26	40	25	4.5	10
	50		12		32	50	31	5.5	15
	60		12		42	50	31	5.5	15

Order Example: - - -
 - - -

■ Customize are also available

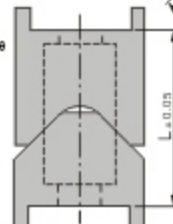


■ Mounting size



**TYPE: JFA54
(Flat Shape)**

■ Mounting size



**TYPE: JFA55
(Groove Shape)**

Type: JFA54 & JFA55

Material: S45C - 1.1191 - Carbon Steel for machinery structures

Hardness: HRC42~45 Through hardening

Type	T	L	L1	L2	H	d
JFA54	-	35	22	23	14	9
	-	25	16	19	11	7
JFA55	16	35	27	28	14	9
	19					

Order Example: - -
 - -

■ Customize are also available